

Fine Art & Antiques

Saturday 7th December at 10am

View Thursday 5th & Friday 6th 10am-7pm and sale day from 9am



Lot 2128

Fully illustrated catalogue www.lskauctioncentre.co.uk

Results available online approximately one hour following the sale

Buyer's Premium charged on all lots at 22.5% plus VAT

Free live bidding available through our website

Your contact at the saleroom is Edward Crichton ecrichton@lsk.co.uk 01284 748 622

IMPORTANT NOTICES

Special attention is drawn to the **Terms of Sale** on our website and displayed in the saleroom.

Paddle Bidding All buyers attending the auction need to register for a paddle number to enable them to bid, this process is simple and takes approximately 30 seconds, however we do require some form of identification i.e. driver's licence.

Absentee Bidding Buyers can submit commission bids by email, telephone, or via our website www.lskauctioncentre.co.uk and we will bid on your behalf. It is important to allow sufficient time for commission bids to be processed when leaving bids. Lacy Scott & Knight offer a **free online bidding service via our website** which becomes 'live' half an hour before the auction starts.

Condition Neither the Auctioneers nor the Vendor are responsible as to the condition of lots listed. The absence of any such reference does not imply that a lot is in good order or free from imperfections or repairs. Intending purchasers are strongly recommended to satisfy themselves prior to the sale of the condition of any lot. Condition reports can be compiled upon request, but must be considered solely as a matter of opinion and not fact. Purchasers are reminded that goods become the sole responsibility of the buyer at the fall of the hammer.

VAT VAT at the prevailing rate is payable on top of the buyers premium.

Buyer's Premium All lots are sold with a Buyer's Premium of 22.5% (unless otherwise stated), this figure is also subject to VAT at the prevailing rate e.g. a buyer with a hammer total of £100 will have a gross invoice of £127.

Artists Resale Rights / Droit de Suite Lots bearing this symbol § are subject to ARR, which is charged at 4% (inclusive of VAT*) on top of the hammer price and Buyers Premium. This is applicable to paintings or works of art whilst the artist is living and for 70 years after the artists death. This charge is payable on lots with a hammer price in excess of €1000 (approx. £850).

Selling Rate Our auctioneers sell at approximately 120 lots per hour, buyers are advised to make sure they are in the saleroom at least 20 minutes before a lot is expected to be offered in case the auctioneer is ahead of schedule.

Payment We accept most methods of payment including cash (up to £8,000), cheques supported by valid banker's card, debit cards and credit cards (Not AMEX or Diners Club).

Bank. LLOYDS, Risbygate Street, BURY ST EDMUNDS **CLIENT:** Lacy Scott & Knight LLP

ACCOUNT NO:32257868 **SORTCODE:**30-64-22 **SWIFT/BIC CODE:**LOYDGB21666 **IBAN NO:**GB71 LOYD 3064 2232 2578 68

Collection/Delivery All lots must be removed from the Auction Centre by midday on the Friday following the sale unless prior arrangement has been made with the auctioneers.

Packing and Postage Most items can be sent in-house for our standard UK rate of £20 for the first three lots (£30 for most of Europe), then £2 per lot thereafter. For bulky/heavy items or to ship outside of Europe, please contact our postage department for a quote on crevell@lsk.co.uk. If we are unable to ship in-house, then we recommend MailBoxes or Alban Shipping.

How to find us The Auction Centre is situated in the heart of historic Bury St Edmunds, directly behind the arc shopping centre and close to main bus/coach and train stations and the A14 dual carriageway. Our address is: 10 Risbygate Street, Bury St Edmunds, Suffolk, IP33 3AA.

Parking We have our own large car park adjacent to the Salerooms which is free of charge to all buyers (**sale days and viewing only**), when this car park is full we suggest using the large Borough car parks close to the Auction Centre.

Antiquarian Books are sold subject to no return.

Jewellery Due to high levels of fraud in the buying of gold and related items, we have had to introduce the following measures for gold and jewellery items: The maximum payment by credit/debit card over the telephone is £500. We strongly recommend buyers use the bank transfer facility. Gold & jewellery items paid for by card over the telephone will not be shipped or released to couriers for at least 5 working days after payment has been made. We trust that potential buyers understand why we have taken these precautions. and that by being vigilant we hope to reduce the instances of credit card fraud which affect not just auction houses, but also vendors, and the unsuspecting owners of fraudulently used credit cards.

BOOKS

Sold subject to no return

2001 **Scultetus, Abraham: Concionum In Jesiam Prophetam ad Populum Haidelbergensem habitarium, Idea...**1609, full calf five banded spine, 4to. (1) **£50-80**

2002 **Trapp, John: Solomonis Panaretos: Or A Commentarie Upon the Book of Proverbs Ecclesiastes And the Song of Songs,** London: Printed by T.R and E.M. for John Bellamie, 1650, leather binding with gilt titled spine, 8vo. (1) **£50-80**

2003 **Panvinio, Onofrio (1530-1568): Onuphrii Panvini Veronensis, De Ludis Circensibus, Libri II De Triumphis, Liber Unus...., Venetiis, Apud Ioannem Baptistam Ciottum Senenfem M.D.C.,** engraved frontis maps and plates, rebound calf spine over card boards, folio. (1) **£100-200**

2004 **Blomfield, Rev. Sevenecroft: Talent And Trial; Or The Adventures Of A Good Son,** London: Darton And Clarke, Holbourn; And William Rock, Walworth, 1845, handwritten to the front end page Give to an old friend by the author 1845, bound in gilt tooled burgundy morocco, Pott 8vo. (1) **£30-50**

2005 **Massey, Frank E. Esq: Portrait Sketches Of Chesire Hunting Men from 1850 to 1890,** George Falkner & Sons, The Deansgate Press Manchester 1903, green and red gilt cloth, oblong folio. (1) **£40-60**

2006 **Bewick, Thomas: (1753-1828), A History Of British Birds.** The Figures Engraved On Wood BY T. Bewick, vols I & II, first editions, vol I Containing The History And Description Of Land Birds, 1797 and vol II Containing The History And Description Of Water Birds, 1804, Newcastle: Printed by Sol. Hodgson for Beilby & Bewick, and Edward Walker For T. Bewick, green half morocco over cloth boards, gilt tooled spines, 8vo. (2) **£50-80**

2007 **Morris, Rev. F.O.: The History Of British Birds,** Fourth Edition In Six Volumes, each with 394 hand coloured plates, London: John C. Nimmo 14, King William Street, Strand, 1895, in green publisher's cloth with gilt tooled pictorial covers and spines, lge 8vo. (6) **£100-150**

2008 **Hulme, Edward F: Familiar Wild Flowers,** First to Fifth Series with coloured plates, Cassell Petter & Galpin: London, Paris & New York, N/D circa 1898, half calf over pebbled boards, 8vo. (5) **£30-50**

2009 **Beresford, Louisa Anne: Life Songs Being Original Poems,** illustrated and illuminated by Louisa Marchioness of Waterford and The Countess of Tankerville, Published James Nisbet & Co. 21 Berners Street W., 1884, in beige pictorial publishers cloth and remains of card slip-case, Royal 4to. (1) **£40-60**

2010 **Robertson, Walford Graham: Old English Songs and Dances,** first and only edition, Longmans, Green, and Co. 39 Paternoster Row, London New York and Bombay, 1902, illustrated boards and cloth spine, folio. (1) **£40-60**

2011 **Whyte-Meville, George, John: The Work's Of,** twenty-five vols, various illustrators, London Ward, Lock & Co., Limited New York and Melbourne, each uniformly bound in half red calf over cloth boards, gilt tooled titles and hunting motifs, octavo. (25) **£40-60**

2012 **Conan Doyle, Sir Arthur: Sherlock Holmes Complete Stories,** nine volumes in two slip-cases to include The Adventures, The Memories, The Return, His Last Bow, The Case-Book, A Study In Scarlet, The Sign Of Four, The Hound Of The Baskervilles and The Valley Of Fear. (2) **£40-60**

2013 **Doyle, Sir Arthur Conan: The Adventures Of Sherlock Holmes,** Illustrations by Sidney Paget, Fourth Edition, London George Newnes Limited, 1894, in blue publisher's cloth, 8vo, together with various others titles by the author many first editions to include **The Poison Belt** (1913), **Through The Magic Door** (1907), **Rodney Stone** (N/D), **The Tragedy Of The Korosko** (1898), **Adventures Of Gerard** (N/D), **Sir Nigel** (1906), **Uncle Bernac** (1897), **The Stark Munro Letters** (1895), **The Green Flag** (1905), **Songs Of Action** (1898), **The Refugees** (1895), **Micah Clarke** (1895) and **The Vital Message** (N/D) (14) **£80-100**

2014 **Lytton, Sir Edward Bulwer: The Works Of,** Library Edition, William Blackwood And Sons, Edinburgh And London, eight volumes, circa 1860, half tan calf over green pebbled boards, 8vo., together with various other volumes to include **Kingsley, Charles: His Letters And Memories Of His Life,** In Two Volumes, London 1879 and **South, Richard (ed): The Entomologist** An Illustrated Journal, seven vols etc. (23) **£30-50**

2015 **Trollope, Anthony: The Works Of**, forty-nine volumes published by The Trollope Society, each uniformly bound in brown cloth boards with titled spines, 8vo, together with eleven other Trollope and related titles to include *The New Zealander*, *Editors And Writers*, *The Journey To Panama*, *Courtship and Marriage*, *The Christmas Stories*, *Tourists And Colonials*, *Thackeray*, *Clergymen Of The Church Of England*, *Huntings Sketches*, **Gerould, Winifred Gregory and James Thayer: A Guide To Trollope**, all uniformly bound in coloured cloth boards and **Moody, Ellen: Trollope On The Net**, all published by the Trollope Society. (60) **£40-60**

2016 **Tennyson, Lord Alfred: Dore Gustave (ills) Enid**, Edward Moxon & Co. 1898, loose text and plates (collated) within green cloth and gilt titled slip folder, folio, **£40-60**

2017 **Darwin, Charles: The Essential Darwin**, four volumes to include *On The Origin Of Species*, *A Naturalist's Voyage*, *The Expression Of The Emotions* and *The Descent Of Man*, London, The Folio Society 1990, housed in slip-case. (1) **£30-50**

2018 **Austen, Jane: The Works Of**, seven volumes to include *Sense And Sensibility*, *Persuasion*, *Northanger Abbey*, *Shorter Works*, *Pride And Prejudice*, *Mansfield Park* and *Emma*, London Folio Society 1975, housed in a single slip case, together with *Northanger Abbey*, London Folio Society 1960 and *Shorter Works*, London Folio Society 1963, each in individual slip-case. (3) **£30-50**

2019 **Hardy, Thomas: The Works Of**, a collection of eighteen **Folio Society** volumes, each uniformly bound in coloured cloth, nine housed in three slip-cases the remainder in individual slip-case, titles to include *A Group Of Nobel Dames*, *A Changed Man*, *Life's Little Ironies*, *A Laodicean*, *The Hand Of Ethelberta*, *Desperate Remedies*, *Two On A Tower*, *The Well Beloved*, *A Pair Of Blue Eyes*, *Tess Of The D'Ubervilles*, *The Return Of The Native*, *Under The Greenwood Tree*, *The Woodlanders*, *Jude The Obscure*, *Far Frm The Madding Crowd*, *The Wessex Tales*, *The Mayor Of Casterbridge* and *The Trumpet Major*. (12) **£30-50**

2020 **Waugh, Evelyn: Sword Of Honour**, three volumes in slip-case to include *Unconditional Surrender*, *Officers And Gentlemen* and *Men At Arms*, London, Folio Society

1990, together with *Brideshead Revisited*, London Folio Society 1995 and *The Loved One*, London Folio Society 1993, each in slip-case. (3) **£30-50**

2021 **Dickens, Charles: The Works Of**, five volumes to include *A Tale Of Two Cities*, *Oliver Twist*, *Great Expectations*, *David Copperfield* and *Pickwick Papers*, Folio Society 1994 re-issue, housed in slip-case, together with various other to include *Dombey And Son*, *Edwin Drood*, *Bleak House*, *Barnaby Rudge*, *Our Mutual Friend*, *Little Dorrit*, *Nicholas Nickleby*, *Martin Chuzzlewit*, *Christmas Books*, *The Old Curiosity Shop* and *Hard Times*, all uniformly bound in individual slip-cases, *My Early Times* and **Hayward, Arthur L.: The Dickens Encyclopaedia**. (14) **£40-60**

2022 **Bronte, Charlotte, Emily and Anne: The Complete Novels**, London Folio Society, 1991, in slip-case, together with various other Folio Society volumes to include **Beare, Geraldine** (selected by): *Short Stories From The Strand*, *Adventure Stories From The Strand & Crime Stories From The Strand*, **Smithson, Helen** (illust): *The Cream Of Noel Coward*, **Kington, Miles** (introd): *The Pick Of Punch*, **Rosen, Michael J** (introd): *The Genius Of James Thurber*, **Hoarder, Mervyn** (introd): *The Best Of Dorothy Parker*, **Heald, Tim** (introd): *The Best After-Dinner Stories*, **D' Epiro, Peter and Pinkowish, Mary Desmond**: *What Are The Seven Wonders Of The World?* and **Virgil**: *Aeneid*. (11) **£30-50**

2023 **Proust, Marcel: In Search Of Lost Time**, six volumes housed in two slip-cases to include *Swann's Way*, *Within A Budding Grove*, *The Guermites Way*, *Sodom And Gomorrah*, *The Captive* and *The Fugitive Time Regained*, London Folio Society second printing 2001. (2) **£30-50**

2024 **Orwell, George: Reportage**, five volumes housed in slip-case to include *Funny But Not Vulgar*, *Down And Out In Paris And London*, *The Road To Wigan Pier*, *My Country Right Or Left* and *Homage To Catalonia*, London Folio Society 1998, together with *Nineteen Eighty-Four*, London Folio Society 2001, in slip-case. (2) **£30-50**

2025 **Duby, George & Lobrichon, Guy: The History Of Venice In Painting**, first edition, published 2007 Aberville Press, New York & London, in red cloth boards with gilt tooled detail, housed in a pictorial slip-case, folio, together with **Norwich, John Julius: A History Of Venice**, London Folio Society 2007, in slip-case and **Hibbert**,

Christopher: Italian Cities, three volumes to include Venice, Rome and Florence, London Folio Society 1997, in slip-case. (3) **£30-50**

2026 **Folio Society**, a collection of volumes, each housed in slipcase, to include Isherwood, Christopher: Mr Norris Changes Trains, Blunden, Edmund: Undertones Of War, Perry, Maria: Elizabeth I, Leeson, Edward (Introd): The Folio Book Of Humorous Anecdotes, Eliot, T.S.: Four Quarters, Gaskell, Elizabeth: Wives And Daughters, Huxley, Aldous: Brave New World, Saki: Short Stories, Maugham, Somerset: Short Stories, Swift, Jonathan: Gulliver's Travels, Joyce, James: Ulysses, Chaucer, Geoffrey: The Canterbury Tales, Rhys, Jean: Wide Sargasso Sea, Macdonell, A.G.: England Their England, Dafoe, Daniel: A Journal Of The Plague Year, Fitzgerald Scott, Francis: The Great Gatsby and Stevenson, Robert Louis: Travels With A Donkey etc. (26) **£30-50**

2027 **Folio Society**, a collection of volumes, each housed in slip-case, to include **Grossmith, George & Weedon**: The Diary Of A Nobody, **Gaskell, Mrs**: Cranford, **Gibbons, Stella**: Cold Comfort Farm, **Orwell, George**: Homage To Catalonia, **Mitford, Nancy**: The Pursuit Of Love & Love In A Cold Climate, **Greene, Graham**: Brighton Rock, **Carroll, Lewis**: Alice's Adventures In Wonderland & Through The Looking Glass, **Priestly, J.B.**: English Journey, **Fothergill, John**: An Innkeeper's Diary, **Morton, H.V.**: In Search Of England, **Lee Harper**: To Kill A Mockingbird, **White Gilbert**: The Natural History Of Selborne, **Forster, E.M.**: A Passage To India, **Woolf, Virginia**: Between The Acts, **Turgenev, Ivan**: The Torrents Of Spring and **Heyerdahl, Thor**: The Kon-Tiki Expedition etc. (24) **£30-50**

2028 **Folio Society**, a collection of volumes, each housed in slipcase, to include **James, T.G.H.**: Egypt Revealed, **Runyon, Damon**: Dream Street, **Joyce, James**: A Portrait Of The Artist As A Young Man, **Stewart, Charles W (Illus)**: Ghost Stories, **Eliot, George**: Middlemarch, **Wodehouse, P.G.**: Leave It To Psmith and Short Stories, **Orwell, George**: Animal Farm, **Wells, H.G.**: Short Stories and **Chesterton, G.K.**: Father Brown Stories etc. (24) **£30-50**

2029 **Folio Society**, a collection of volumes, each housed in slipcase, to include **Camus, Albert**: The Plague, **Strachey, Lytton**: Eminent Victorians, **Quarrie, Eleanor (trans)**: Grimm's Folk Tales, **Carr, Joseph Lloyd**: A Month In The Country, **Cossley-Holland, Kevin (Introd)**: Folk-Tales Of The British Isles, **Sheridan Le Fanu, Joseph**:

Uncle Silas, **Mann, Thomas**: Buddenbrooks, **Tey, Josephine**: The Franchise Affair and **Williamson, Henry**: Tarka The Otter etc. (22) **£30-50**

2030 **Folio Society**, a collection of volumes, each housed in slip-case to include **Jerome, K. Jerome**: Three Men In A Boat & My Life And Times, **Twain, Mark**: Huckleberry Finn, **Grahame, Kenneth**: The Wind In The Willows, **Chesterton, G.K.**: The Father Brown Stories (I & II), **Coleridge, Samuel Taylor**: The Rime Of The Ancient Mariner & Among The Lakes & Mountains, **Thomas, Dylan**: Under Milk Wood, **Fitzgerald, Edward**: The Rubaiyat Of Omar Khayyam, **Sassoon, Siegfried**: Sherston's Progress, Memoirs Of A Fox-Hunting Man & Memoirs Of A Infantry Officer, **Shakespeare, William**: All's Well That Ends Well, Love's Labour Lost, King Henry IV Part One, Twelfth Night, Measure For Measure, together with five other Folio/Trollope Society volumes, no cases to include **Tannahill, Reay**: Regency England, **Vallance, Rosalind (Introd)**: Dicken's London, **Bunyan, John**: The Pilgrim's Progress, **Knox, Ronald A.**: Barchester Pilgrimage and **Brown, Alec (Trans)**: Droll Stories. (25) **£30-50**

2031 **Folio Society**, a collection of volumes all housed in slip-cases to include Williams, Dr Ann & Martin, Professor G.H. (ed): Domesday Book vols I-III, Martin, Gregory (introd): Canaletto, Toulouse-Lautrec, Henri: Paris Album, Thorpe, Lewis (trans): The Bayeux Tapestry And The Norman Invasion, Troutman, Philip (introd): Francisco Goya Paintings, Drawings And Prints, Thirlwell, Angela (introd): The Pre-Raphaelites & Their World, Hudson, Roger (comp): The Jubilee Years & London Portrait Of A City, Grigson, Geoffrey: The Englishman's Flora and Edward Gibbons Atlas Of The World etc. (20) **£30-50**

2032 **Folio Society**, a collection of volumes to include **Fielding, Henry**: Tom Jones, The Novels Of to include Tom Jones, Jona Than Wild, Joseph Andrews & Amelia, **Collins, Wilkie**: Tales Of Suspense & **Poe, Edgar Allen**: Tales Of Mystery And Imagination, **Barber, Richard (introd)**: Legends Of King Arthur - The Holy Grail, Tristan & Arthur, **Nesbit, Edith**: The Story Of The Treasure Seekers, The Wouldbegoods & New Treasure Seekers, **Kipling, Rudyard**: Twenty One Tails, Just So Stories, The Jungle Book & The Second Jungle Book, **Stephen, Leslie**: Hours In A Library vols I-III and **Wilde, Oscar**: Stories, Plays And Poems & Essays And Letters, all housed in slip-cases. (10) **£30-50**

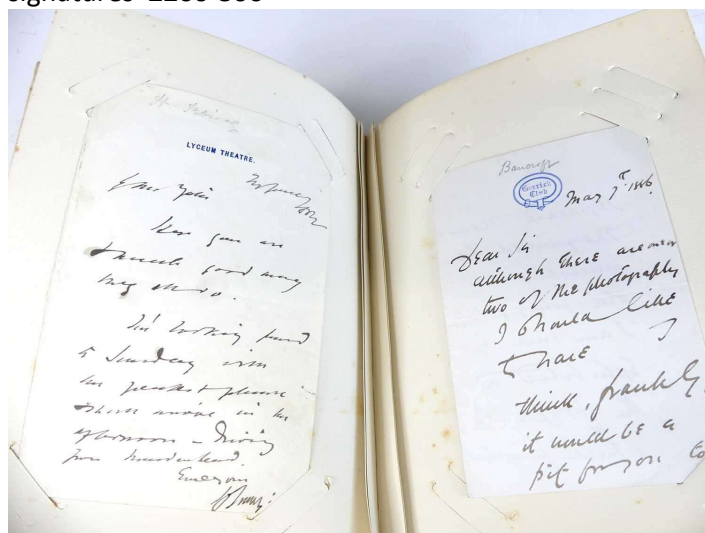
2033 **Reference Library**, 8 vols to include French And English Dictionary, Encyclopaedia, Gazeteer, Classics And Mythology, French And Latin Quotations, English Quotations And Proverbs, Atlas and Dictionary, Asprey & Co. Ltd., New Bond Street, circa 1925, burgundy leather 12mo, housed in a walnut book trough. **£40-60**

2034 **Reference Library**, 8 vols to include French And English Dictionary, Encyclopaedia, Gazeteer, Classics And Mythology, French And Latin Quotations, English Quotations And Proverbs, Atlas and Dictionary, Asprey & Co. Ltd., New Bond Street, circa 1950, full tan leather 12mo, housed in an oak book trough. **£40-60**

2035 **Newnes, George (ed): The Strand Magazine**, a collection of twenty-three volumes many consecutive to include Vol III January-June 1892, vols V 1893 to XX 1900, XXIV, XXV, XXX, XXXII, XLIII and LXXI, each uniformly bound in blue publisher's pictorial cloth, 4to. (23) The 1905 and 1912 volumes containing the Sir Arthur Conan Doyle novels Sir Nigel and The Lost World. **£160-200**

2036 **An Edwards & Sons locking Autograph & Letters album, comprising a collection of late Victorian and early Edwardian notes and calling cards signed by theatrical, political and other notables of the period**, to include; **Royalty & Nobles** Prince Frederick Duleep Singh on Old Buckenham Hall, Attleborough, headed paper dated 1904; **George, Duke of Cambridge**, on Gloucester House headed black-edged paper dated 1862; Antarctic explorer **Sir Philip Lee Brocklehurst** letter on paper embossed with the family crest and motto 'Veritas Me Dirigit'; **John Campbell, 9th Duke of Argyll 'Marquis of Lorne'**, on Kensington Palace headed paper; **William Ward, 1st Earl of Dudley** on Dudley House headed black-lined paper dated 1884. **Politicians, Authors & Artists** Politician **Lord Randolph Churchill** on Beaufort Castle, Beaulieu, headed paper; **Lord Cadogan** on Lord Privy Seal headed paper dated 1891; Dividend payment request signed by **Viscount Castlemain** dated 1725; King Solomon's Mines author **Sir Henry Rider Haggard** on headed paper from Ditchingham House, Bungay, Suffolk, (with embossed hieroglyph motif and dated '88, arranging a visit from a Mr Broadley (possibly barrister and author Alexander Meyrick Broadley?); illustrator and caricaturist **Harry Furniss** on 'Lika Joko' headed and illustrated paper (the short-lived humorous magazine which he founded and was editor after leaving

Punch), dated September 1894 (one month before the first edition of the magazine, which only ran until April 1895); artist and keeper of the Royal Academy **Ernest Crofts** on Burlington House headed paper dated 1901. **Actors & other Performers** Actress **Violet Vanbrugh** to Mr Gray 1894; actor & singer Charles Hayden Coffin on headed paper for Campden Hill Cottage and dated 1892; actress **Winifred Emery** from the Theatre Royal Brighton; actor, director, and mentor to Noel Coward, **Sir Charles Henry Hawtrey** dated 1892; actor and theatre manager **Sir Johnston Forbes-Robertson** on embossed notepaper for 22 Bedford Square; American actress **Cora Brown-Potter** on headed paper for Burleigh House, 16 Blenheim Road; actress **Evelyn Mary Millard**; actress **Mrs Patrick Campbell** on headed paper from 33 Kensington Square; actor-manager **Sir Squire Bancroft** on headed paper for The Garrick Club dated 1886; singer and comedy actor **Rutland Barrington**. As well as some unidentified examples and a selection of clipped signatures **£200-300**



CERAMICS & GLASS

2040 **A Delft blue and white tin-glazed earthenware dish**, late 17th/early 18th century, of lobed form, decorated with a figure within a fenced garden, dia.34cm **£100-200**

2041 **A Hispano Moresque tin-glazed earthenware charger**, probably Valencia, 19th century, copper lustre decorated with foliage, dia.39cm **£80-120**

2042 **A Veuve Perrin tin-glazed earthenware jar and cover**, circa 1770, of cylindrical form, decorated with a figure within a landscape and floral sprays, h.20cm **£50-80**

2043 **A Dutch Delft blue and white wet drug jar**, 18th century, annotated 'OXIMEL SIM' within a reserve, h.22cm **£300-400**

2044 **A large Delft blue and white tin-glazed earthenware jar and cover**, 18th century, of lobed form, having a dog of Fo finial, decorated with fruit and foliage, JV monogram to the underside, h.64cm **£300-400**

2045 **A Delft blue and white tin-glazed earthenware vase**, 18th century, decorated with peacocks within a relief scroll border, h.25cm, together with **another similar**, h.23cm (2) **£70-100**

2046 **A blue and white pearlware meat dish**, circa 1810, transfer decorated in the Neptune or Apotheosis of Nelson pattern, unmarked, 33 x 42cm, together with **a matching plate, dish and comport** (4) **£100-200**

2047 **A Chinese porcelain table salt**, Qianlong period (1736-1795), enamel decorated with flowers and insects, w.8cm **£40-60**

2049 **A Bow blue and white porcelain sauce boat**, circa 1765, of lobed form, decorated in the Desirable Residence pattern, l.18.5cm **£30-50**

2050 **A Bow porcelain coffee can**, circa 1760, enamel decorated with flowers, h.6.5cm **£20-40**

2051 **A Bow porcelain coffee can and saucer**, circa 1760, of pineapple moulded form, decorated in green and gilt, can h.6cm, saucer dia.12.5cm **£100-150**

2052 **A small Bow porcelain sauce boat**, circa 1760, of lobed form, enamel decorated with flowers, l.10.5cm, together with **a Bow porcelain sparrow beak jug**, enamel decorated with floral sprays, h.7.5cm (2) **£50-80**

2053 **A Bow porcelain coffee can**, circa 1760, enamel decorated with flowers, h.6cm **£60-80**

2054 **A Bow blue and white porcelain sweetmeat dish**, circa 1755, the central rockwork column surrounded by three scallop shell dishes, decorated in the Desirable Residence pattern to the wells, h.13cm **£200-400**

2055 **A Bow blue and white porcelain pickle dish**, circa 1765, in the form of a leaf, decorated with a fruiting vine, l.9cm **£40-60**

2056 **A Bow blue and white porcelain sauce boat**, circa 1765, of moulded shape, decorated with figures in a landscape, l.18cm **£30-50**

2057 **A Bow porcelain dish**, circa 1750, in the form of a leaf, decorated with insects and fruit, l.20cm **£30-50**

2058 **A Longton Hall porcelain dish**, circa 1754, in the form of cos lettuce leaves, l.24.5cm, together with **another Longton Hall porcelain dish**, circa 1750 enamel decorated with a floral spray, l.20cm (2) **£120-180**

2059 **An English porcelain Cos Lettuce sauceboat**, probably Derby circa 1760, moulded as a swan and polychrome decorated with floral sprays, h.9cm **£100-140**

2060 **A Derby porcelain porcelain dolphin ewer cream jug**, circa 1768, decorated in relief with shell moulding and underglaze painted in blue, h.8cm **£80-100**

2061 **A Lowestoft porcelain pattipan**, circa 1770, blue and white decorated in the Flowers & Moth pattern, dia.9cm **£50-70**

2062 **A Lowestoft blue and white porcelain tall mug**, circa 1780, decorated in the Pagoda and Bridge pattern, h.9cm **£150-200**

2063 **A Lowestoft porcelain teapot**, circa 1775, underglaze blue decorated in the Long Fence pattern, h.9.5cm **£150-200**

2064 **A Lowestoft porcelain teapot**, circa 1780, of bullet form, underglaze blue decorated in the Tall Trees pattern and red enamel decorated with flowers, h.13.5cm **£150-200**

2065 **A Lowestoft porcelain coffee can**, circa 1770, enamel decorated in the rare Yellow Window pattern, h.6cm **£30-50**

2066 **A Lowestoft porcelain coffee can**, circa 1790, enamel decorated with flowers in the manner of Thomas Curtis, h.6cm, together with **another Lowestoft blue and**

white porcelain coffee can, circa 1770, decorated with a rock and flowers, h.6cm (2) **£100-150**

2067 **A Lowestoft porcelain sparrowbeak cream jug**, circa 1775, polychrome decorated with floral sprays by the Tulip-painter, h.8cm **£120-160**

2068 **A Lowestoft porcelain sparrow beak jug**, circa 1790, enamel decorated with floral sprays in the manner of Thomas Curtis, h.8cm, together with a **Bow porcelain sparrow beak jug**, circa 1765, enamel decorated with figures, h.7.5cm (2) **£150-200**

2069 **A Staffordshire agateware teapot**, circa 1755, of squat globular form, the body with blue and brown striations, standing upon three paw feet, having an associated Whieldon type lid, h.12cm **£250-350**

2070 **A Baddeley Littler porcelain teapot**, circa 1780, of bullet form, having a flower finial, polychrome enamel decorated with a figure within a Chinese landscape, h.14.5cm, together with a **Baddeley Littler porcelain tea bowl**, circa 1780, enamel decorated with Chinese figures within a fenced garden, dia.8cm (2) **£100-150**

2071 **A Leeds creamware sucrier**, circa 1770, the lid with flower finial, polychrome enamel decorated with a seated figure, w.10cm, together with **another similar Leeds creamware sucrier**, w.10.5cm (2) **£30-50**

2072 **A Leeds creamware coffee pot**, circa 1770, of baluster form, having a floral finial and crossover strap handle, enamel decorated with floral sprays, h.30cm, together with a **Leeds miniature teapot**, circa 1770, of bullet form, polychrome decorated with foliage, h.10cm (2) **£40-60**

2073 **A Liverpool porcelain Seth Pennington Low Chelsea ewer cream jug**, circa 1780-85, blue and white printed in the Fenced Garden pattern, h.7.5cm **£80-120**

2074 **A Caughley porcelain part dinner service**, circa 1780, decorated in blue and gilt with butterflies and stars (13) **£100-200**

2075 **A Worcester porcelain tea bowl on stand**, circa 1780, blue and white printed in the Mother & Child and Man Fishing pattern, both with crescent C mark verso, stand dia.12cm **£60-80**

2076 **A Worcester 'blanc-de-chine' porcelain teapot**, circa 1758, of barrel form, relief decorated with a Chinese landscape, h.10.5cm **£150-250**

2077 **A Worcester porcelain sparrowbeak cream jug and cover**, Dr Wall period circa 1765, decorated in the Queen Charlotte pattern, marked verso, h.12.5cm **£100-150**

2078 **A Worcester porcelain Dutch jug**, circa 1757, moulded with cabbage leaves and painted in the Cabbage Leaf Jug Floral pattern, underglaze blue X mark verso, h.20.5cm *Note: For a near-identical example of this jug, see lot 128 in Bonham's Barbara Leek Collection sale held 12th March 2008* **£300-500**



2079 **A Worcester porcelain saucer**, circa 1765, decorated in the rare Candle Fence Pavillion pattern, crescent mark verso, dia.13cm **£70-100**

2080 **A pair of Worcester Flight & Barr coffee cans**, circa 1792-1804, each monochrome decorated with ruins amidst gilt bands, h.6cm; together with two early 19th century Spode porcelain coffee cans, each decorated in the Imari palette and heightened in gilt; two Derby examples; and another by Stephenson & Hancock polychrome decorated with sprays of fruit, puce mark verso (7) **£100-150**

2081 **A pair of Mason's ironstone vases**, circa 1820, each of octagonal form, flanked by hydra handles, decorated with butterflies and foliage in gilt and enamel upon a cobalt ground, h.17.5cm, together with a **similar Mason's bowl**, dia.23cm, and **spill vase**, h.11cm, each decorated with flowers and insects, and a **Mason's tea bowl**, gilt decorated with foliage to the well, dia.9cm (5) **£100-150**

2082 **Four Bow blue and white porcelain handled knives and forks**, circa 1750, each having a pistol grip haft decorated with scrolling foliage, largest knife l.28cm **£100-150**

2083 **Seven Worcester porcelain-handled knives and forks**, circa 1775, each having a pistol grip haft relief moulded in the Chrysanthemum pattern, cutter marks for Joshua Cawston of Snig Hill, Sheffield, knives l.27.5cm **£300-400**

2084 **Six Meissen porcelain-handled knives and forks**, late 18th/early 19th century, varying shapes and patterns, largest l.21cm **£100-150**

2085 **A Mennecy porcelain knife and fork**, circa 1720-40, the cannon shafts gilt and enamel decorated with oriental flowers, knife l.24cm **£200-300**

2086 **Three St Cloud blue and white porcelain forks and one knife**, circa 1720, the shafts of varying shape, two in the Lambrequin pattern, knife l.21cm **£80-120**

2087 **A Chelsea porcelain handled dinner knife**, circa 1756, having a moulded scroll form haft, enamel decorated with birds, l.28.5cm, together with **a Chelsea porcelain handled cake knife and fork**, circa 1750, the fork having later silver prongs, each moulded with a flowering branch, knife l.21.5cm (3) **£150-200**

2088 **A Herend porcelain dish**, of scallop form, enamel decorated with fish, l.22.5cm **£40-60**

2089 **A Castle Hedingham blue glazed pottery tankard**, circa 1890, commemorating Ye Market Cross Ipswich, pad mark and signed Edward Bingham to the underside, h.20.5cm **£120-160**

2090 **A collection of continental porcelain**, 19th century, to include a tea caddy, enamel decorated with flowers, h.13cm, together with **a circular trinket box**, the lid enamel decorated with a courting couple, dia.7cm, **a jar and cover**, of ovoid form, enamel decorated with flowers, h.14cm, and **a gilt metal mounted bowl**, enamel decorated with flowers, dia.12.5cm (4) **£50-100**

2091 **A continental porcelain tete-a-tete set**, probably Limoges, 20th century, decorated with floral panels within gilt borders **£50-100**

2092 **A pair of Royal Copenhagen porcelain table candlesticks**, the tulip sockets issuing from flared square section stems applied with four biscuit fired lion masks with swags between, on swept square bases, painted in underglaze blue with flowers, printed and inscribed marks, h.23cm, together with **a Royal Copenhagen porcelain half lace bowl**, dia.23.5cm (3) **£150-250**

2093 **A pair of Meissen porcelain three-branch table candelabra**, 19th century, each decorated with two children before a floral encrusted tree trunk, incised 128 to the underside, underglaze blue crossed swords mark, h.21cm **£200-400**

2094 **A St Cloud porcelain pot purri**, circa 1730, in the form of a floral encrusted vase upon a rockwork plinth, h.23.5cm, together with an associated lid (2) **£150-250**

2095 **A pair of Berlin KPM porcelain goblets**, 19th century, the gilt bowls decorated with cartouches of cherubs upon figural supports, h.13cm **£100-200**

2096 **A Doccia porcelain coffee can**, circa 1780, enamel decorated in the Tulipano pattern, h.6.5cm, together with **another Doccia porcelain coffee can**, circa 1770, decorated with a castle in a landscape, h.6.5cm, and **a Furstenburg porcelain coffee can**, 18th century, enamel decorated with flowers, h.5.5cm (3) **£200-300**

2097 **A Vienna porcelain tea bowl**, circa 1744-49, enamel decorated with flowers, dia.7cm, together with **a Hoechst porcelain coffee can**, circa 1765, enamel decorated with a figure in a landscape, h.6.5cm, and **a Ludwigsberg porcelain coffee can**, late 18th century, enamel decorated with flowers, h.6cm (3) **£80-120**

2098 **A set of three Vienna porcelain tea cups and two saucers**, 19th century, the cups decorated with a portrait of Marie Antoinette, Madame Le Brum and H A Heppburg, underglaze blue beehive mark to the underside, saucers dia.13.5cm (5) **£100-200**

2099 **A continental porcelain chocolate cup and saucer**, probably Vienna, 19th century, the cup decorated with a portrait of a lady upon a gilt ground, having a swan neck handle and standing upon three paw feet, h.11cm **£150-250**

2100 **A Ludwigsberg porcelain cream jug and cover**, circa 1760, of baluster form, having a fruit finial,

decorated with a figure within a landscape, underglaze blue mark to the underside, h.15cm **£80-120**

2101 **A Meissen porcelain six-place coffee service**, 19th century, decorated with gilt borders upon a green ground, underglaze crossed swords mark to the underside **£400-600**

2102 **A Vienna porcelain tete-a-tete set**, 19th century, with foliate gilt decoration upon a blue ground, underglaze blue beehive mark to the underside **£40-80**

2103 **A Vienna porcelain six-place coffee service**, 19th century, decorated with buff and gilt spots, underglaze blue beehive mark to the underside **£200-400**

2104 **A Sevres style porcelain breakfast set**, 19th century, decorated with cartouches of putti within cisele gilt borders upon a blue ground, teapot h.11cm (6) **£200-400**

2105 **Christian Joachim for Royal Copenhagen**, mid-20th century, an extensive 'The Spanish pattern' porcelain tea, coffee and dinner service, decorated with bands of gilt and orange decoration **£500-1,000**

2106 **A Herend white glazed porcelain model of a setter dog**, 1939, shown standing, incised *Vastagh Gyorgy Budapest* and dated to the base, impressed Herend and incised 5277 to the underside, h.24cm **£200-300**

2107 **A Chinese blanc-de-chine porcelain figure of Adam**, Qing Dynasty, 18th century, shown standing upon a rocky plinth, h.23cm, together with **a Chinese blanc-de-chine porcelain incense holder**, in the form of a dog of Fo, h.12cm (2) **£100-150**

2108 **A collection of four soft paste porcelain figures**, probably Chelsea, mid-18th century, each shown standing with arms raised, largest h.13cm **£100-200**

2109 **A collection of continental porcelain and glassware**, 19th century and later, to include three miniature porcelain figures, a pair of models of monkeys, and three Venetian glass models of dogs, largest h.10cm (8) **£50-100**

2110 **A pearlware cow creamer**, probably Yorkshire or Staffordshire, circa 1800, shown standing beside a

milkmaid, having pink sponge decoration upon a green base, h.14cm **£150-250**

2111 **A pair of Chelsea porcelain models of finches**, circa 1759, each shown perched upon a floral encrusted stump, h.7cm, together with **an unusual porcelain model of a swan**, 19th century, h.6cm, and **a pair of Chinese green glazed pottery models of parrots**, h.10cm (5) **£50-100**

2112 **A pair of Derby porcelain figural table salts**, circa 1765, each shown standing holding a basket upon a rococo base, patch marks to the underside, h.13cm (2) **£100-150**

2113 **A Derby 'Africa' porcelain figure**, circa 1760, shown wearing a shell hat and holding a cornucopia beside a dog, patch marks to the underside, h.13.5cm **£40-60**

2114 **A Derby porcelain figure of a grape seller**, circa 1760, shown seated upon a stump, patch marks to the underside, h.14cm **£60-80**

2115 **A Derby porcelain figure 'Sacrifice'**, circa 1770, shown standing holding a goat upon a canted plinth, incised marks to the underside, h.14.5cm, together with **another Derby porcelain figure of cupid**, circa 1770, shown seated with a bird incised marks to the underside, h.11cm (2) **£70-100**

2116 **A Bow porcelain figure of a gentleman**, circa 1765, shown standing beside a basket of fruit upon a rococo base, h.18cm **£30-50**

2117 **A Bow porcelain theatrical figure of David Garrick as a nun**, circa 1755, shown seated reading a book, h.15cm **£70-100**

2118 **A Bow porcelain figure of a nun**, circa 1765, shown standing upon a floral encrusted base, h.14.5cm **£200-300**

2119 **A Bow porcelain figure of a girl**, circa 1760, shown in colourful dress standing upon a floral encrusted base, red enamel anchor and dagger mark to the underside, h.13.5cm **£200-300**

2120 **A Bow porcelain figure 'Gardener's Companion',** circa 1765, shown standing holding a basket of flowers, h.17.5cm **£200-300**

2121 **A Staffordshire pearlware figure of a boy,** 19th century, shown standing holding a basket of fruit, h.16cm **£20-40**

2122 **A Minton majolica figure of a child riding a goat,** late 19th century, upon a naturalistic base, h.27cm **£40-80**

2123 **A Mennecy porcelain figure of a girl,** circa 1750, shown standing with arms raised beside a goose, incised DV to the underside, h.15.5cm **£30-50**

2124 **A Mennecy porcelain figural double salt,** 1750-60, in the form of a girl wearing a flower-sprigged dress, shown seated between two blue-lined shell dishes, 19.5cm **£150-250**

2125 **A German porcelain blackamoor figure,** 18th century, shown standing upon a scrolled base and later wooden plinth, h.17cm **£50-80**

2126 **A Meissen porcelain figure of a Hussar soldier,** shown on horseback upon a floral encrusted base, underglaze blue crossed swords mark to the underside, h.27.5cm **£200-400**

2127 **A Meissen porcelain figure group of children,** circa 1880-1923, after the original by Michael Victor Acier circa 1780, incised model no. G13, underglaze blue crossed swords mark, h.18cm **£400-600**

2128 **A set of three Meissen porcelain models of hares,** circa 1750, modelled by J.J. Kaendler, naturalistically coloured and mounted upon a floral encrusted base, marked to the bases, largest h.16cm **£5,000-8,000**



2130 **An antique stained glass panel,** of quatrefoil form, depicting the heads of four saints, housed in a wrought iron mount, decorated with a dragon and crown, 49 x 27cm **£200-300**

2131 **A wine glass,** circa 1765, the basal ribbed ogee bowl above a multi series opaque twist stem, h.15cm **£120-180**

2132 **A wine glass,** circa 1765, the ogee bowl above a multi series opaque twist stem, h.14.5cm **£120-180**

2133 **A wine glass,** circa 1765, the basal ribbed ogee bowl with solid base above a multi series opaque twist stem, h.14cm **£120-180**

2134 **A wine glass,** circa 1750, the bucket bowl above a baluster and basal knopped air twist stem and folded foot, h.15cm **£120-180**

2135 **A wine glass,** circa 1765, the basal ribbed ogee bowl above a multi series opaque twist stem, h.14.5cm **£120-180**

2136 **A wine glass,** circa 1770, the ogee bowl above a multi-series opaque twist stem, h.15cm **£120-180**

2137 **A wine glass,** circa 1770, the round funnel bowl above a multi-series opaque twist stem, h.15cm **£120-180**

2138 **A wine glass,** circa 1770, the ogee bowl etched with fruiting vines above a multi-series opaque twist stem, h.13cm **£120-180**

2139 **A wine glass,** circa 1770, the ogee bowl etched with trailing flowers above a knopped single series opaque twist stem, h.15cm **£120-180**

2140 **A wine glass,** circa 1770, the ogee bowl etched with trailing flowers above a multi-series opaque twist stem, h.14cm **£120-180**

2141 **A wine glass,** circa 1750, the bell shaped bowl with solid base above a baluster air twist stem, h.17.5cm **£150-200**

2142 **A glass goblet**, early 19th century, the round funnel bowl etched with Britannia above a faceted inverted baluster stem, h.20.5cm **£150-200**

2143 **A suite of Waterford Colleen pattern crystal drinking glasses**, to include nine wine hocks, h.19cm, four brandy glasses, h.13cm, six flutes, h.15cm, six sherry glasses, h.10cm, eight small wine glasses, h.11cm, eight medium wine glasses, h.12cm, six short tumblers, h.8.5cm, six large tumblers, h.11cm, and one water jug (54) **£150-250**

2144 **A pair of cranberry glass pedestal bowls**, 19th century, each of flower shape, dia.23cm, together with **a similar faceted cranberry glass dressing table jar**, dia.14cm (3) **£40-80**

SCENT BOTTLES

2148 An Edwardian porcelain scent bottle, of flattened heart shape with a silver screw cap, A Bromet & Co, Birmingham, 1902, h.6cm, together with one other porcelain scent bottle with lustre glaze printed with a portrait of a maiden, having a gilt metal hinged cover and inner glass stopper, h.5.5cm. (2) **£50-80**

2149 A 19th century Continental porcelain scent bottle of cylindrical form with rounded shoulders, the central panel painted with a figure holding flowers within a gilt border, having a spherical gold painted stopper, h.10cm, together with a 19th century porcelain scent bottle of fluted octagonal form, underglaze decorated with a Thames Barge, h.10cm and a small Venetian glass scent bottle of teardrop shape with swirling decoration and gilt stopper, h.6cm. (3) **£50-80**

2150 A late Victorian porcelain scent bottle, having a slender neck to a bulbous lower body, on a red ground painted with flowers and gold sprays, impressed Macintyre and numbered 913 verso, having a silver screw cap and collar united by a chain, makers marks for Cornelius Desormeaux Saunders & James Francis Hollings (Frank) Shepherd, no assay, stamped Sil, h.12cm. **£50-80**

2151 A Victorian silver scent bottle of tear-drop shape, having foliate embossed decoration with vacant shield shaped cartouche, the hinged cover with inner glass

stopper, maker William Stringer Mills, London, 1892, 8cm. **£50-80**

2152 A Victorian silver scent bottle of rounded rectangular form, the body embossed with leaves and flowers, the cartouche engraved Rachel, 1889, having a hinged cover and inner glass stopper, maker Horton & Allday, Birmingham, 1888, 15.5cm. **£80-120**

2153 An early 20th century Hanau (Germany) silver scent bottle, of oval form, embossed with a farmer and his wife to the opposing side, suspended by three chains with one attached to the cork stopper, stamped 930 with a crown over SR for Simon Rosenau, h.5.5cm (excluding chains), together with an Edwardian porcelain scent bottle of tear-drop shape with a silver screw cap, 3.7cm, a blue glass and gilt metal mounted scent bottle with associated stopper, h.9cm and an early 20th century green glass and white metal overlaid scent bottle and stopper, h.8cm. (4) **£50-80**

2154 A Victorian scent bottle, having a facet cut ruby glass body and floral embossed white metal hinged cover opening to a glass inner stopper, h.8cm, together with two other ruby glass scent bottles and one cranberry glass example. (4) **£30-50**

2155 A Victorian cranberry glass double ended scent bottle, having a facet cut barrel shaped body and embossed white metal caps, 8cm. **£40-60**

2156 A Victorian scent bottle of cornucopia shape, having a facet cut ruby glass body with hinged white metal cap and mount united by a chain with suspension ring, 9cm, together with one other Victorian scent bottle, having a clear cut glass body of tapering form, the hinged floral embossed cover stamped 925 Sterling opening to a glass inner stopper, 9.5cm. (2) **£40-60**

2157 A late 19th century amber glass scent bottle and stopper, the domed body with five (of six) vignettes etched with architectural scenes, h.9cm, together with three other amber glass scent bottles and a Uranium glass scent bottle, largest h.14cm. (5) **£50-80**

2158 A late 19th century glass scent bottle of tapered cylindrical form, hand painted with a heron amidst reeds, having a gilt painted glass stopper, h.9cm, together with a 19th century scent bottle, the clear glass body of flattened tear-drop shape with applied yellow

metal cartouche, the engine turned gilt metal cover opening to a glass inner stopper, h.9cm and three miniature / chatelaine scent bottles to include cranberry, Bristol blue and green glass examples. (5) **£50-80**

2159 A late Victorian scent bottle, having a wrythen shaped cylindrical clear glass body, the hinged silver cover embossed with flowers and C-scrolls with initialed cartouche opening to a glass inner stopper, maker William Neale, Chester, 1899, h.7.5cm, together with a late 19th century Dutch scent bottle, the slender neck to a bulbous clear glass body with white metal hinged cover and inner stopper, h.12cm and three other silver mounted clear glass scent bottles, largest h.16.5cm. (5) **£50-80**

2160 A Victorian miniature scent bottle, having a clear cut glass body of flattened circular form with a silver hinged cover and inner glass stopper, M. Bros, Birmingham, 1886, h.5cm, together with a 19th century Continental miniature scent bottle, the blue glass body hand painted with flowers, the white metal screw cap stamped silver, h.5.5cm and three other late Victorian / Edwardian glass scent bottles. (5) **£40-60**

2161 A Victorian scent bottle, having a ruby overlaid and clear cut glass body, the hinged white metal cover embossed with leaves and flowers opening to a glass inner stopper, 6.5cm, together with one other similar green overlaid example, h.7cm, an Edwardian clear cut glass scent bottle with silver screw cover, Hart & Sons, London, 1902, h.7.5cm and an Edwardian clear glass scent bottle of cylindrical form with silver screw cap, makers mark obscured, Birmingham, 1906. h.6cm. (4) **£50-80**

2162 A Victorian scent bottle, the body of oval form with rounded shoulders with blue and white overlaid diamond cut decoration, the engine turned hinged cover opening to a glass inner stopper, h.9.5cm, together with two other Victorian scent bottles, each having a blue overlaid cut glass body and hinged white metal cover with inner stoppers, 9cm and 8cm. (3) **£50-80**

2163 A Victorian double ended scent bottle, having a facet cut Bristol blue glass body with hinged gilt metal caps and interior glass stoppers, 11.5cm, housed in an associated leather case. **£50-80**

2164 A Victorian double ended scent bottle, having a clear glass facet cut body with spring loaded hinged cover and screw cap to the opposing end, each with engine turned and floral engraved decoration, the interior hinged cover marked Bourne & Taylor, 15cm. **£50-80**

2165 A Victorian double-ended scent bottle, having a green facet cut glass body and embossed gilt metal hinged cover, the press release marked May's Patent, with screw cap to the opposing end, 15cm, housed in a cylindrical leather case. **£100-150**

2166 A Victorian combination scent bottle and vinaigrette, having a green glass body of oval shape, the spring loaded silver gilt cover with M monogram (lacking interior glass stopper), the opposing end with silver gilt hinged cover and interior pierced grille, maker Sampson Mordan & Co., London, 1873, h.8.5cm, housed in a fitted leather case retailed by Barber & Smith, Goldsmiths 36 Cornhill. **£200-300**

2167 In the manner of Thomas Webb, a late Victorian Stourbridge cameo glass scent bottle, the turquoise baluster body overlaid and carved in white with flowering branches and stiff leaves, having a floral embossed silver screw cap, makers mark partially obscured G?W Ltd, Birmingham, 1897, h.8cm. **£200-300**

2168 In the manner of Thomas Webb, a late Victorian Stourbridge cameo glass scent bottle, the turquoise glass body of teardrop shape overlaid and carved in white with floral sprays, having an unmarked white metal floral embossed hinged cover, h.10.5cm. **£400-600**



- 2169 An early 20th century Continental blue tinted glass scent bottle and stopper, the body of compressed melon form with blue stripes on a clear glass domed foot, h.15.5cm, together with a pair of John Galliano purple glass scent bottles and contents, housed in a red gift box, a Chinese scent bottle (lacking stopper), an Art Deco clear glass scent bottle and three others. (8) **£80-120**
- 2170 An Art Deco style atomiser, the clear crystal body of fan shape, the gilt metal fitting marked to the collar Marcel Franck, Made in France, Brevette S.G.D.S., h.12cm, together with one other Art Deco style cut crystal atomiser with chrome fitting, h.17cm and an Art Deco purple glass atomiser with hexagonal chrome fitting, h.13.5cm. (3) **£60-80**
- 2171 An early 20th century atomiser, having a red overlaid cut glass body of tapering form on a facet cut stem and domed foot, h.9.5cm, together with one other early 20th century atomiser base, the clear cut glass body of square shape, having a white metal and pink guilloche enamel cap marked Sterling, h.6.5cm. (2) **£50-80**
- 2172 An Art Deco style Czechoslovakian red glass scent bottle, having a step shaped base, the stopper etched with leaves and flowers, having etched J Pesnicak signature verso, h.21cm. **£50-80**
- 2173 An Art Deco style Czechoslovakian clear glass scent bottle, the base of fan shape with hobnail cut sides, the stopper etched as a lady seated before a mirror, signed J. Pesnicak verso, h.17cm. **£50-80**
- 2174 An Art Deco blue tinted glass scent bottle, the cut glass body of boat shape, the stopper etched with a profile portrait of a maiden, h.13.5cm, together with seven other Art Deco and later blue tinted glass scent bottles, largest h.15cm. (8) **£100-150**
- 2175 An Art Deco style pink tinted frosted glass scent bottle of fan shape, the stopper surmounted by a hummingbird and flower, h.14cm, together with a clear glass scent bottle and stopper of oval form, the body with a band of crystals, h.12cm, and one other facet cut clear glass scent bottle and stopper, h.15.5cm. (3) **£50-70**
- 2176 A large Murano style latticino glass scent bottle, having a pink and white striped globular body on a gold swirl circular domed foot, the stopper with three pink flower heads and gold thread leaves, h.27cm. **£30-50**
- 2177 An Art Deco style Czechoslovakian green glass scent bottle, the body modelled as two crossed leaves, the stopper relief decorated with flower heads, signed J Pesnicak and with factory sticker verso, h.17cm. **£50-80**
- 2178 A late 19th century French scent bottle, the green glass body of rounded square form with pierced floral gilt metal mounts, the hinged cover inset with a view of the Arc de Triomphe du Carrousel, with inner glass stopper, h.8cm. **£40-60**
- 2179 A Daum Rose Passion scent bottle, having a rectangular clear glass body and pate-de-verre stopper, etched to the base Daum France, h.10cm. **£50-80**
- 2180 A Daum Ginko scent bottle, having a clear glass body of rectangular form and pate-de-verre stopper, etched to the base Daum France, h.11cm, together with one other similar example with blue iris pate-de-verre stopper, h.9.5cm. (2) **£150-200**
- 2181 A Daum pate-de-verre scent bottle, having a rectangular body and iris stopper, etched verso Daum France, h.20cm. **£200-300**
- 2182 A Daum pate-de-verre jonquille scent bottle, the tapering body to a base of green grass, having an orange daffodil stopper, sealed with contents, etched verso Daum France 170/300, with Daum Eau de Parfum sticker, h.22cm. **£250-300**

SILVER & PLATED WARES

- 2185 **An early George III silver card waiter**, having a raised egg and dart rim, upon three hoof feet, maker probably Ebenezer Coker, London 1770, dia.17.5cm, 9ozt **£200-300**
- 2186 **A George III silver card waiter**, having a beaded piecrust rim and engraved armorial, maker probably Robert Rugg II, London 1774, dia.17cm, 9.6ozt **£200-300**
- 2187 **A George III silver lidded tankard**, of tapering barrel form with two sections of raised banding and an inset clear glass base, bearing coat of arms for the Huddleston family above motto 'Soli Deo Honor et Gloria' (Glory to God Alone), inscribed 'Sacred to

Friendship to Mirth & mild Ale' around the top and 'From JJ to his friend Richard Huddleston Esq' around the lower bottom, the hinged cover having an openwork thumbpiece and engraved with the Huddleston crest of two arms holding a scalp aloft to the centre, with acanthus leaf capped shaped handle, maker Robert Sharp, London, date mark worn, h.15.5cm (excluding thumbpiece), base dia.11.5cm, gross weight 34.5ozt
Note: Although not positively identified as the same in the inscription, a Richard Huddleston (1768-1847) of Sawston had a varied career ranging from officer in the Cambridgeshire Militia to becoming a JP, Deputy Lieutenant and High Sheriff of Cambridgeshire and Huntingdonshire. He is also noted for pursuing a title which had been extinct for centuries. This Huddleston family were Catholic and their ancestral home Sawston Hall was reputedly where Mary Tudor (soon to be Mary I) stayed while fleeing the Duke of Northumberland's troops after the death of her brother Edward VI. £600-900



2188 A set of four small George III silver dishes, of circular form with reeded rims, each having engraved Order of the Garter (Royal Coat of Arms) bearing motto "Honi Soit Qui Mal y Pense" to upper inner rim, maker John Emes, London 1799, dia.10cm, gross weight 7ozt **£120-160**

2189 A pair of silver table candlesticks in the early 18th century style, having multi-knopped stems to domed octagonal bases, maker Walter H Wilson Ltd, London 1966, h.18cm, 30.8ozt **£450-600**

2190 A matched set of four George III cast silver table candlesticks, each of elaborately decorated scrolling

knopped form, with detachable sconces, to shaped circular spreading feet, three being maker TH (apparently identical marks for Thomas Harper I / Thomas Hobbs / Thomas Holland II), London 1810 & 1811, the perfectly matched single example maker William Fountain, London 1811, h.26cm, base approx dia.14cm, gross weight approx 136ozt **£1,600-2,400**

2191 A pair of George II silver candlesticks with Victorian silver twin-branch three light candelabra over, of Corinthian column form with acanthus capitals to stepped and beaded square bases, with removable shaped circular sconces with beaded rims, the matching candelabra tops with scrolling leaf capped arms, the stick bases maker IC (JC - many possible smallworkers) London 1759, the candelabra tops maker Robert Garrard II (subsequently R & S Garrard & Co), London 1877, stick h.31.5cm, gross h.48cm, arm w.38cm, gross weight approx 76ozt (some residue from previously affixed weighted bases still present) **£1,000-1,500**

2192 An early George III silver meat skewer, with shell cast ring handle, makers mark worn, London 1761, 31.5cm, 4.7ozt **£100-150**

2193 A collection of 18th century and later silver flatware, mostly being spoons, to include a circa 1770 serving spoon with feather-edge engraved stem, a pair of 1790 sauce ladles by Richard Crossley, a set of six teaspoons with floral cast terminals, salt spoons, sugar tongs, and a cake and slice and spoon duo etc, many having bright cut engraved and beaded decoration, various dates and makers, serving spoon length 18.5cm, gross weight approx 17ozt **£200-300**

2194 A collection of George III and later silver spoons in the Fiddle pattern, to include tablespoons, teaspoons, salt spoons, soup ladle, sifting spoon and a serving spoon, makers to include William Eley I & William Fearn, Jonathan Hayne, and Robert Williams & Sons (Robert, James & Josiah Williams) etc, mostly London assays, serving spoon length 30cm, gross weight 28ozt (16) **£400-500**

2195 A set of twelve William IV silver tablespoons in the Fiddle pattern, each having monogram terminals, maker Jonathan Hayne, London 1834, length 23cm; together with six matching teaspoons, maker Samuel Hayne & Dudley Cater, London 1837 (bearing William IV head), length 14cm, gross weight 38ozt **£500-700**

2196 **A Victorian silver soup ladle**, in the Queens pattern double-struck (to each side), with engraved dove crest, maker The Portland Co (Francis Higgins III), London 1861, length 32cm, 9.8ozt **£120-180**

2197 **A 19th century silver harlequin cutlery suite**, in the Fiddle pattern and each piece having eagle armorial engraved terminal, some with further monogram, all London assays, comprising sixteen table forks (12 being William Eley I & William Fearn, 1803); eleven dessert spoons (nine being John & Henry Lias, 1845); eight teaspoons (Chawner & Co (George William Adams), 1847); and four dessert forks (three being William M Traies, 1826), table fork length 20cm, gross weight 65ozt **£800-1,200**

2198 **A William IV Irish Britannia standard scissor action silver wax jack**, with scrolling handle, the scissor action jack having chain attached conical snuffer, the thread column standing upon a circular base with inner pierced detail, maker John Egan, Dublin 1834, h.14.5cm (including snuffer), base dia.7.5cm, gross weight 4.9ozt (excluding wax shown in image) **£100-150**

2199 **A late Victorian tortoiseshell and silver mounted dressing table box**, of hinged rectangular form, maker William Comyns & Sons, London 1889, w.9.5cm **£80-120**

2200 **A late Victorian silver inkstand**, comprising a stepped rectangular stand with canted corners, reeded edge and four winged lion paw feet, two recessed pen rests, the raised central section having a rectangular stamp box with flame finialled lift-off cover, flanked by two clear cut glass silver-topped removable inkwells, maker Mappin & Webb Ltd, London 1899 & 1900 (inkwell covers), w.30cm, weight 17.9ozt (excluding inkwells) **£250-350**

2201 **A George V silver inkstand**, comprising two attached inkwells with clear glass liners and a pen tray, the stand of rectangular form with gadrooned and shell corners, standing upon four scroll feet, the inkwell covers having conforming decoration, maker C S Harris & Sons Ltd, London 1911, further stanced for Robert Jones & Sons of Liverpool verso, length 21.5cm, 17ozt (excluding glass liners) **£250-350**

2202 **A Victorian silver three-piece tea set**, comprising teapot, twin handled sugar bowl and cream jug, each

piece of lower bulbous form, all-over repousse and chase floral and scroll decorated, having cartouche to either side (one side initial engraved with an 'M'), the S-scroll handles further cast with acanthus leaves, each standing upon four ornate scroll feet and having gilt-washed interiors, the teapot having a high domed hinged cover with foliate crown finial, ivory insulators to the handle, maker Edward & John Barnard, London 1859, teapot h.22cm; together with a pair of silver sugar tongs, all-over chased with foliate scrolls and having plume shaped ends, marks worn but probably William & John Deane, length 13.5cm, gross weight 49ozt (4) Ivory submission ref: 8WNC16KK **£700-1,000**

2203 **A late 19th century Chinese silver swing handled table basket**, of shaped circular form with repousse scrolling cloud decoration to the rim, having openwork loop hinged handle and standing upon four applied scrolling cloud feet, retailer Wang Hing & Company, further stamped 90 and with makers mark, dia.24cm, 17ozt **£250-350**

2204 **An Edwardian silver monteith bowl**, having a round body with notched rim to hold wine glass stems, all-over repousse decorated with a band of scrolling and floral decorated cartouches, one cartouche with engraved monogram and the opposing bearing family crest (possibly Scottish as featuring Lymphads), to a further repousse decorated raised circular foot, maker Lee & Wigfull (Henry Wigfull), Sheffield 1903, further stamped Oldfields Ltd Silversmiths Liverpool to the underside, dia.30.5cm, h.22cm, 55.4ozt **£800-1,200**



2205 **An Edwardian silver four-piece bachelors tea set**, comprising teapot, coffee pot, sugar bowl and cream jug, each piece of squat rounded form with everted shaped rims, standing upon three button capped triformal feet,

the tea and coffee pots having hinged recessed cover and ebonised wooden handles (teapot lacking finial), maker James Dixon & Sons Ltd, Sheffield 1904-1908 (each a different date letter), sugar bowl dia.10cm, coffee pot h.13.5cm (excluding handle), gross weight 34.5ozt **£400-600**

2206 **A George V silver serving tray**, repousse decorated with ribboned bands and roses to the centre, maker Charles Weale, Birmingham 1912, further Rd. No.574793, length 36cm, 9.8ozt **£150-200**

2207 **An early 20th century Iranian (Persian) silver dish**, of circular form with raised rounded edge, all-over profusely decorated with engraved and embossed ghalam zani concentric bands of geometric and floral motifs, bearing Λ^f 84 standard mark and workshop/makers mark verso, dia.16.5cm, 7.2ozt **£200-300**

2208 **A George V silver footed bonbon dish**, having all-over foliate and diamond pierced decoration, everted rim with gadrooned edge, and standing upon three capped claw feet, maker Goldsmiths & Silversmiths Co Ltd, London 1911, further marked Goldsmiths & Silversmiths Company 112 Regent Street verso, dia.20.5cm, h.6.5cm, 14ozt **£200-250**

2209 **An impressive George V silver salver**, of shaped circular form, having a shell and swag moulded piecrust border surrounding a plain ground, standing upon three scroll feet, maker Adie Brothers Ltd, Birmingham 1932, further stamped for retailer Robinson & Co of Singapore and Kuala Lumpur with Reg. No. 700773, dia.42cm, approx 80ozt **£1,200-1,400**

2210 **An impressive George V silver twin-handled serving tray**, of shaped rectangular form with scroll canted corner and raised rim, maker Atkin Brothers, Sheffield 1921, 57 x 41cm (excluding handles), approx 112.5ozt **£1,500-2,000**

2211 **A George V silver entree dish and cover**, of shaped domed rectangular form with canted corners and reeded elliptical handle, maker Cooper Brothers & Sons Ltd, Sheffield 1929, further numbered S2125 verso, approx dimensions 27.5 x 19 x 9cm (excluding handle), gross weight 46.2ozt **£550-650**

2212 **A pair of George V silver tankards**, of lower bellied form with everted rims and stepped spreading bases, having S-scroll acanthus leaf capped handles, maker Blackmore & Fletcher Ltd, London 1934, h.12cm, gross weight 15ozt **£200-300**

2213 **A pair of George VI silver coffee and hot water pots**, each in the Queen Anne style, with walnut S-scroll handles, maker Blackmore & Fletcher Ltd of Birmingham, 1941, height 20.5cm, 31oz **£400-600**

2214 **A pair of Elizabeth II silver figural salts**, cast as a barefoot peasant couple in early 19th century dress and holding panniers, upon naturalistic bases, maker Edward Barnard & Sons Ltd, London 1977, h.17.5cm, gross weight 32ozt **£800-1,200**

2215 **Garrard & Co Ltd - a large commemorative silver presentation pedestal bowl**, the rose, thistle and shamrock cast silver-gilt handles surmounted with rampant royal lions, the whole inscribed '*A Birthday Tribute to Her Majesty Queen Elizabeth The Queen Mother, 4th August 1990*', limited edition No.61/90, London 1990, 64.8ozt, dia.26cm, with original certificate and in fitted blue leather, velvet and silk lined case **£1,500-2,000**

JEWELLERY & WATCHES

2219 **A yellow metal necklace**, comprising open chevron link sections each terminating with a 9.5mm embossed square link, and a fringed section to the centre with twenty-six 12.7mm skittle shaped pendants suspended below floral links, having a box clasp and figure-of-eight safety catch, length 435mm, width of chevron sections 5.75mm, gross weight 39.5g, not hallmarked but tested as 18ct gold **£1,400-1,800**

2220 **A 9ct gold long curb link chain**, comprising a round belcher link chain with seven knotwork sections and a swivel clasp, length 1530mm, w.4.3 x 7.25mm, gross weight 92.3g, stamped and tested as 9ct gold **£1,600-1,800**

2221 **A 9ct gold necklace, arranged as triple ball chain and bar sections**, length 42cm; together with a 9ct gold and enamel safety pin brooch, 3.8cm, gross weight 13g (2) **£200-300**

2222 **A yellow and white metal, aquamarine and diamond oblong cluster pendant**, comprising a cushion cut aquamarine within a border of 26 single cut diamonds, all in grain and bezel settings, attached to a box link chain with bolt ring clasp, aquamarine dimensions approx 17.8 x 14.2 x 7.9mm, weight estimated as 11.86 carats, diamond dimensions each approx 1.7 x 1.05mm, total weight estimated as 0.26 carats, assessed mounted collectively colour I to J and clarity SI1 to SI2, chain length 385mm, w.1.2mm, gross weight 12.3g, chain stamped 750, pendant tested as 18ct gold **£800-1,200**



2223 **An opera length row necklace of 190 baroque freshwater pearls**, strung knotted with a hinged pearl divider, length 1780mm, gross weight 143g **£200-300**

2224 **A cultured pearl necklace**, arranged as 67 graduated pearls measuring from 4.2 to 7.3mm, with white metal diamond set clasp, set with six graduated old cut diamonds, total weight estimated as 0.75 carats, 4.3cm, 19.5g **£400-600**

2225 **An 18ct white gold diamond tennis bracelet**, featuring 56 round brilliant cut diamonds in bezel settings, with box clasp and figure-of-eight safety catch, diamond dimensions each approx 2.35 x 1.4mm, total weight estimated as 2.24 carats, assessed mounted collectively colour H to I and clarity VS2 to SI1, length 188mm, gross weight 12g, hallmarked 18ct, London, sponsor H&T Ltd **£1,800-2,000**

2226 **A contemporary 18ct gold and tanzanite set bracelet**, arranged as 23 oval cut heat treated tanzanite, each measuring 6x4mm, total carat weight 10.65, max length 17.5cm, 13.5g, with Gemporia certificate of authenticity **£700-900**

2227 **An 18ct yellow and white gold, tanzanite and diamond dress ring**, featuring a cushion cut tanzanite in a bezel setting, with a quatrefoil of triangular cut diamonds to either side in calibr  settings, tanzanite dimensions approx 10.6 x 9 x 6.1mm, weight estimated as 4.5 carats, diamond dimensions each approx 3.32 x 2.55 x 1.32mm, total weight estimated as 0.48 carats, assessed mounted collectively colour H to I and clarity VS1 to VS2, size L, gross weight 5.3g, hallmarked 18ct, London import 1995, sponsor London Assay Office **£1,000-1,500**

2228 **A white metal aquamarine and diamond oval cluster ring**, featuring a centre octagonal aquamarine claw set within a border of 18 round brilliant and two baguette cut diamonds, aquamarine dimensions approx 10.52 x 8.75 x 6.65mm, weight estimated as 4.43 carats, baguette cut diamond dimensions 2.9 x 1.55 x 1.35mm, round brilliant cut diamond dimensions each approx 1.7 x 1.1mm, total diamond weight estimated as 0.48 carats, assessed mounted collectively colour H to I and clarity VS1 to VS2, size O½, gross weight 6.9g, stamped and tested as 18ct gold and platinum **£400-600**

2229 **A white metal aquamarine and diamond three-stone ring**, featuring an octagonal cut diamond with a round brilliant cut diamond to either side, all in bezel settings, aquamarine dimensions approx 9.9 x 10 x 5.75mm, weight estimated as 3.80 carats, diamond dimensions between approx 3.8 x 2.38mm and 3.95 x 2.38mm, total weight estimated as 0.43 carats, assessed mounted collectively colour I to J and clarity VS2 to SI1, size J½, gross weight 5.9g, stamped and tested as platinum **£500-700**

2230 **A white metal diamond triple cluster ring**, featuring three sections each with eight treated blue diamonds within a border of 57 meleur cut diamonds, all in claw settings, diamond dimensions between approx 1 and 3.25 x 2.3mm, total weight estimated as 1.27 carats, assessed mounted collectively as SI1 to SI2, meleur diamonds assessed as colour I to J, size M½, gross weight 3.5g, not hallmarked but stamped and tested as 14ct gold **£800-1,200**

2231 **An 18ct white gold diamond rectangular cluster ring**, featuring a centre emerald cut diamond within a border of ten round brilliant cut diamonds, all in claw settings, emerald cut diamond dimensions approx 6.71 x 4.95 x 3.6mm, weight estimated as 1.10 carats, brilliant

cut diamond diameters each approx 3.05mm, total weight estimated as 1 carats, assessed mounted collection colour J to K and clarity VS2 to SI1, size K, gross weight 5.2g, hallmarked London 2013, sponsor JJO **£2,000-3,000**

2232 **A diamond pendant and matching earrings**, the pendant with diamond shaped panel set with round brilliant cut diamonds and a ribbon of channel set baguette cut diamonds, total estimated weight of diamonds approx. 1.13cts, all set in unmarked white and yellow precious metal (tests as approx. 14ct gold), 31mm long, inc. hanging loop, together with a pair of matching earrings, 15mm long, with posts for pierced ears and screwback butterflies, overall total estimated weight of diamonds approx. 1.93cts, (9.6g) **£900-1,200**



2233 **A 9ct yellow gold bangle, earrings and pendant suite**, the torque style bangle set with five clusters of one 2.8mm purple and four 1.6mm white paste stones, bangle width 4mm, dia. 60 x 55cm, the cluster earrings each having a 2.7mm centre purple stone and four 2mm white stones, all claw set, with post and scroll fittings, the pendant in the style of a cross and having a centre 2.8mm purple stone and four 2.1mm white stones, pendant length 36mm, attached to a 450mm Prince of Wales rope chain with bolt ring clasp, chain width 1mm, gross weight 17.9g, hallmarked 9ct, London, sponsor SJ **£450-550**

2234 **A 14ct yellow and white gold, sapphire and diamond suite**, comprising a hinged bangle with an oval sapphire within a border of 12 round brilliant cut diamonds, sapphire dimensions approx 5.65 x 4.39 x 2.65mm, weight estimated as 0.60 carats, diamond diameters between approx 1.3 and 1.5mm, total weight estimated as 0.11 carats, bangle width 2.5mm, dia. 67 x 61mm; a snake link necklet with wishbone section at the front set with an oval sapphire within a border of 12 round brilliant cut diamonds, with box clasp and figure-of-eight safety catch, sapphire dimensions approx 5.2 x 4.3 x 2.6mm, weight estimated as 0.52 carats, diamond

diameters each approx 1.5mm, total weight estimated as 0.12 carats, length 420mm, chain width 1.7mm; and a sapphire and diamond oval cluster ring, the centre sapphire measuring approx 5 x 4.05 x 2.4mm and estimated as weighing 0.44 carats, within a border of twelve 1.5mm round brilliant cut diamonds, total weight estimated as 0.12 carats, size P, gross weight 28.2g, all stamped with common control marks for 14ct gold **£1,400-1,800**

2235 **A white and yellow metal chrysoprase, ruby and diamond brooch**, featuring a 9.7 x 7.15mm round chrysoprase cabochon within a foliate surround, with six 2.65 x 2.1mm oval rubies and 31 rose cut diamonds, all in closed back settings, with base metal hook clasp and safety chain, diamond diameters between approx 1.4 and 4.3 x 2.6mm, brooch length 30mm, gross weight 8.4g, not hallmarked but tested as silver and 15ct gold **£500-600**

2236 **A white metal diamond 16-ray star brooch**, comprising 54 Old European and rose cut diamonds in grain settings, with blue enamel border and safety clip, diamond diameters between approx 1.1 and 3.7mm, total weight estimated as 0.81 carats, assessed mounted collectively colour I to J and clarity SI1 to SI2, brooch length 38mm, width 30mm, gross weight 9.7g, not hallmarked but tested as 18ct gold **£500-600**

2237 **An 18ct yellow gold three-dimensional tortoise brooch**, having beaded detail to the shell and two 1.7mm round red stone eyes, with roller catch fastening, brooch length 35mm, width 25mm, gross weight 22.6g, hallmarked 18ct, London 1963, sponsor HGM **£700-1,000**

2238 **A white and yellow metal, diamond openwork cluster brooch**, comprising 88 Old European and one rose cut diamond in cut-down grain settings, with detachable fitting and safety chain, diamond dimensions between approx 1.2 and 5.6 x 4.85 x 4mm, total weight estimated as 2.55 carats, assessed mounted collectively colour J to K and clarity SI1 to SI2, brooch dimensions approx 36 x 26mm, gross weight 10.2g, not hallmarked but tested as 15ct gold and silver **£800-1,200**

2239 **A yellow metal stylised floral spray brooch**, comprising three movable carved amethyst flowers each with a centre 1.9mm round brilliant cut diamond and three carved nephrite jade leaves, with a roller catch

fastening, brooch dimensions 55 x 42mm, gross weight 13.3g, not hallmarked but stamped 585 and tested as 14ct gold **£300-500**

2240 An Art Deco white metal diamond bar brooch, comprising a pierced hexagonal section set with 15 round brilliant cut diamonds, with safety clip, diamond diameters between approx 1.1 and 3.2mm, total weight estimated as 0.19 carats, assessed mounted collectively colour I to J and clarity SI1 to SI2, brooch length 68mm, gross weight 5.4g, not hallmarked but tested as 18ct gold **£200-300**

2241 A yellow and white metal, emerald and diamond bar brooch, featuring an Old European cut diamond with three rectangular cut emeralds to either side, all in grain settings, with a safety clip, diamond dimensions approx 3.3 x 1.91mm, weight estimated as 0.13 carats, assessed mounted colour J to K and clarity SI1 to SI2, emerald dimensions each approx 2.3 x 2 x 1.4mm, total weight estimated as 0.24 carats, brooch length 60mm, gross weight 4.3g, not hallmarked but tested as 15ct gold and platinum **£200-300**

2242 A white metal diamond eternity ring, having 25 round brilliant cut diamonds in channel settings, diamond diameters each approx 2.5mm, total weight estimated as 1.25 carats, assessed mounted collectively colour H to I and clarity SI1 to SI2, size M½, gross weight 3.3g, not hallmarked but stamped 750 and tested as 18ct gold **£800-1,000**

2243 An 18ct white gold, pink sapphire and diamond half eternity ring, having four octagonal pink sapphires alternating with three emerald cut diamonds, all in channel settings, pink sapphire dimensions each approx 3.75 x 3 x 2mm, total weight estimated as 0.96 carats, diamond dimensions each approx 3.8 x 2.7 x 2.05mm, total weight estimated as 0.57 carats, assessed mounted collectively colour H to I and clarity VS1 to VS2, size M½, gross weight 5.9g, hallmarked 18ct, London 2006, sponsor TT **£600-800**

2244 An 18ct white gold diamond half eternity ring, signed Cartier featuring nine round brilliant cut diamonds in square settings, diamond dimensions each approx 3.35 x 2mm, total weight estimated as 1.17 carats, assessed mounted collectively colour H to I and clarity VS1 to VS2, size L½, gross weight 8.3g, stamped

and tested as 18ct, engraved Cartier M11745 1999 to the inside **£1,800-2,400**

2245 An 18ct yellow and white gold diamond half eternity ring, comprising five round brilliant cut diamonds in claw settings, diamond dimensions between approx 4.2 x 2.5mm and 4.45 x 2.6mm, total weight estimated as 1.40 carats, assessed mounted collectively colour H to I and clarity SI1 to SI2, size approx K, gross weight 7.8g, hallmarked 18ct, Birmingham, sponsor Domino **£800-1,000**

2246 A pair of yellow metal diamond hinged huggy hoop earrings, each with 25 round brilliant cut diamonds grain set to the front, diamond diameters each approx 1.25mm, total weight estimated as 0.30 carats, earring widths 5.4mm, gross weight 6.8g, not hallmarked but stamped and tested as 14ct gold **£300-400**

2247 A pair of contemporary 14ct gold multi-stone set ear pendants, on shepherd's crook fittings, each set with amethyst, garnet, peridot and blue topaz, 4.3cm (excluding fittings), 2.4g **£300-400**

2248 A pair of white metal diamond flower cluster earrings, each having a centre round sapphire within a border of eight round brilliant cut diamonds, all in claw settings, with post and scroll fittings, sapphire diameters each approx 4.15mm, total weight estimated as 0.73 carats, diamond diameters each approx 2.35mm, total weight estimated as 0.64 carats, assessed mounted collectively colour H to I and clarity VS1 to VS2, gross weight 2.9g, not hallmarked but tested as 18ct gold **£200-300**

2249 A pair of yellow and white metal diamond flower cluster drop earrings, each with nine rose cut diamonds in cut-down grain settings, with closed backs and hook wire fittings, diamond diameters between approx 1.95 to 2mm and 2.8mm, earring lengths 25mm, gross weight 3.7g, not hallmarked but tested as silver and 18ct gold **£140-160**

2250 A yellow and white metal diamond solitaire ring, featuring a round brilliant cut diamond in a six-claw setting, diamond dimensions approx 7.6 x 7.65 x 5mm, weight estimated as 1.94 carats, assessed mounted colour I to J and clarity I2 to I3, size N, gross weight 3.5g, not hallmarked but tested as approx 14ct gold **£800-1,200**

2251 A white metal diamond two-stone ring, comprising an Old European and a round brilliant cut diamond in claw settings, having three single cut diamonds set in each shoulder, Old European cut diamond dimensions approx 4.5 x 3.6mm, round brilliant cut diamond dimensions approx 5 x 5.15 x 2.75mm, single cut diamond diameters each approx 1.3mm, total diamond weight estimated as 0.94 carats, assessed mounted collectively colour J to L and clarity SI2 to I1, size P, gross weight 3.4g, not hallmarked but tested as platinum **£600-800**

2252 An 18ct white metal diamond flower head cluster ring, arranged as seven round brilliant cuts, the centre stone weighing approx 0.17 carats, the outer stones each 0.14 carats, total diamond weight estimated as 1.01 carats, colour assessed as G-H and clarity VS1-VS2, all in a claw setting, setting dia.10.1cm, size K, 5.1g **£500-800**

2253 A Russian yellow metal diamond set wedding ring, each 4mm band flush set with fifteen 2.6mm round brilliant cut diamonds, total weight estimated as 2.70 carats, size approx H½, not marked but tested as 18ct gold, diamonds not assessed due to restriction of setting and dirt **£1,200-1,500**

2254 A 22ct gold court shaped wedding band, Chester 1945, band w.3.5mm, size I, sponsor FCW; together with a late Victorian example, size K, gross weight 7.7g (2) **£350-400**

2255 A platinum, ruby and diamond oblong cluster ring, comprising a centre oval ruby within a border of 20 trillion and trapeze cut rubies in claibré settings, and four curved sections each with seven round brilliant cut diamonds, with five further diamonds grain set in each shoulder, principal ruby dimensions approx 9.1 x 7.5 x 2.7mm, weight estimated as 1.65 carats, remaining ruby dimensions between approx 1.85 x 1.3mm and 3 x 2.1 x 1.7mm, total weight estimated as 1.40 carats, diamond diameters each approx 1.1mm, total weight estimated as 0.15 carats, assessed mounted collectively colour H to I and clarity SI1 to SI2, size approx M, gross weight 7g, hallmarked platinum 900 Birmingham, sponsor WHD **£1,200-1,800**

2256 A yellow metal, ruby and diamond fancy openwork cluster ring, featuring a centre round faceted

ruby within a surround of 52 round brilliant cut diamonds in claw and grain settings, ruby dimensions approx 8.6 x 8.85 x 3.75mm, weight estimated as 2.40 carats, diamond diameters each approx 1.5mm, total weight estimated as 0.52 carats, assessed mounted collectively colour I to J and clarity SI2, size L½, gross weight 6.1g, not marked but tested as approx 18ct **£500-600**

2257 A French 18ct white gold sapphire and diamond cluster ring, comprising a cushion shaped sapphire within a halo of 20 round brilliant cut diamonds, with eight further diamonds in each shoulder, all in grain and bezel settings, sapphire dimensions approx 7.31 x 7.3 x 4.9mm, weight estimated as 2.30 carats, diamond diameters each approx 1.35mm, total weight estimated as 0.28 carats, assessed mounted collectively colour H to I and clarity VS1 to VS2, size approx M, gross weight 9.4g, bearing French eagle mark for 18ct gold, signed Waskell Paris, tested as 18ct gold **£800-1,200**



2258 A yellow and white metal, emerald and diamond three-stone ring, featuring a centre step-cut emerald with two round brilliant cut diamonds to either side, all in claw settings, emerald dimensions approx 7.89 x 7.5 x 4.6mm, weight estimated as 1.85 carats, diamond dimensions between approx 6.1 x 3.95mm and 6.31 x 4mm, total weight estimated as 1.86 carats, assessed mounted collectively colour J to K and clarity SI2 to I1, size N½, gross weight 4.1g, not hallmarked but tested as 18ct gold **£1,000-1,200**

2259 A contemporary 14ct gold multi-sapphire set necklace, arranged as 43 oval cut bezel set sapphires, each measuring approx 5.7 x 3.8 x 2.2mm, 50cm, 3.8g **£600-800**

2260 A yellow metal multi-stone heavy curb link necklet, featuring peridot, blue topaz, amethyst, citrine, and garnet oval cabochon stones in heavy bezel settings, with lobster clasp, cabochon dimensions each approx 7.5

x 6 x 3.6mm, length 420mm, link w.10mm, gross weight 68.3g, stamped and tested as 14ct gold **£1,500-2,000**

2261 A contemporary 14ct gold and sapphire set necklace, arranged as 49 bezel set oval cut sapphires, each measuring approx 4.6 x 3.2 x 2mm, 56cm, 4.2g **£800-1,000**

2262 A contemporary 14ct gold multi-sapphire set bracelet, arranged as twelve bezel set oval cut sapphires, each measuring approx 5.9 x 4.6 x 3.1mm, length 17cm, 3g **£250-350**

2263 A yellow metal floral engraved multi-disc bracelet, with engraved ladder style clasp and safety chain, bracelet length 200mm, width 11mm, gross weight 19.9g, not hallmarked but stamped 916 and tested as 22ct gold **£800-1,200**

2264 A 9ct white gold and jade bracelet, arranged as five leaf carved spinach jade roundels with barlink white gold dividers, 20cm; together with a pair of 9ct white gold and carved jade ear clips, with screw fittings, h.4.5cm, 23.5g; a jade rectangular pendant (a/f); silver turquoise set pendant; and a pair of white metal and green paste set pendants (5) **£400-600**

2265 A 15ct gold opal dress ring, featuring an oval white opal cabochon with blue, green and red colour flashes, within a bezel setting, opal dimensions approx 17.5 x 13.95 x 4.65mm, weight estimated as 5.90 carats, size N½, gross weight 6.8g, stamped and tested as 15ct gold **£500-600**

2266 A platinum diamond and pearl crossover ring, the claw-set round cut diamond measuring 7.3 x 7.37 x 4.3mm, total weight estimated as 1.41 carats, colour G-F and clarity VS1, with a natural pearl diameter 8.04mm, the whole in a filigree setting to plain and polished shoulders and shank, size L/M, 4.3g **£3,000-5,000**

2267 An 18ct yellow gold sapphire heavy dress ring, featuring an octagonal cut sapphire bezel set within a 17mm head, sapphire dimensions approx 7.55 x 6.9 x 3.85mm, weight estimated as 2.06 carats, size P½, gross weight 13g, hallmarked 18ct, Sheffield 1997, sponsor EFLtd **£700-900**

2268 An 18ct white gold diamond trilogy ring, comprising three round brilliant cut diamonds in

crossover claw settings, diamond diameters between approx 4.59 and 4.65mm, total weight estimated as 1.09 carats, assessed mounted collectively colour H to I and clarity SI1 to SI2, size L½, gross weight 2.6g, partial hallmark for 18ct, Birmingham, no date, sponsor worn **£400-600**

2269 An 18ct white gold diamond circular cluster ring, featuring 19 round brilliant cut diamonds in tiered claw settings, diamond diameters between approx 3.7 and 4.05mm, total weight estimated as 3.60 carats, assessed mounted collectively colour J to K and clarity SI1 to SI2, size U, gross weight 8.4g, hallmarked 18ct, London 1976 **£1,500-2,000**

2270 An 18ct gold diamond half eternity ring, comprising five graduated round brilliant cut diamonds in claw settings, diamond dimensions between approx 2.75 x 1.75mm and 3.7 x 2.21mm, total weight estimated as 0.58 carats, assessed mounted collectively colour J to K and clarity SI2 to I1, size K, gross weight 3.4g, not hallmarked but stamped and tested as 18ct gold **£220-300**

2271 A modern 9ct gold ropetwist necklace, w.7mm, length 49cm; together with matching bracelet, 18cm, gross weight 35.2g **£600-800**

2272 A yellow metal oval trace link long guard chain, with swivel clasp, length 1620mm, clasp length 20mm, chain w.2.6mm, gross weight 32.7g, not hallmarked but tests as approx 18ct gold **£1,200-1,400**

2273 A yellow metal long turquoise set guard chain, having twenty 6.4mm rough turquoise beads alternating with ten figure-of-eight sections and elongated trace link chain with swivel clasp, length 1330mm, chain w.1mm, gross weight 20.5g, not marked but tested as 18ct gold **£800-1,000**

2274 A multi-row gold brick link bracelet, with box clasp, length 191mm, w.18mm, gross weight 52.7g, hallmarked 18ct, London 1968, sponsor Saunders & Shepherd **£1,800-2,200**

2275 A pair of white metal, pearl and diamond articulated drop earrings, each featuring a 5mm cultured half pearl within a border of 14 single cut diamonds, suspended below articulated sections grain set with seven graduated single cut diamonds, with post

and disc backs, diamond diameters between approx 0.9 and 2.7mm, total weight estimated as 0.44 carats, assessed mounted collectively colour I to J and clarity SI1 to SI2, earring lengths 31mm, gross weight 4.3g, not hallmarked but tested as approx 18ct gold, in fitted box signed Mappin & Webb **£180-220**

2276 A pair of white metal diamond drop earrings, each with two Old European cut diamonds in claw settings, with post and scroll fittings, diamond dimensions between approx 3 x 2.85 x 2.6mm and 7.19 x 6.65 x 4.35mm, total weight estimated as 3 carats, assessed mounted collectively colour K to L and clarity VS2 to SI1, gross weight 3.4g, not hallmarked but tested as approx 18ct gold **£4,000-5,000**

2277 A yellow metal ruby and diamond ring and earring set, the ring designed as a circular cluster with six oval rubies and eleven round brilliant cut diamonds, all in claw settings, ruby dimensions each approx 3.8 x 3 x 1.7mm, total weight estimated as 1.02 carats, diamond dimensions between approx 1.2 x 1.05mm and 1.62 x 1.15mm, total weight estimated as 0.10 carats, size P½, gross weight 4.1g, stamped and tested as 18ct, the earrings being a pair of flower clusters, each with five oval rubies and a centre round brilliant cut diamond, in claw and bezel settings, with post and plastic backs, ruby dimensions each approx 4 x 3.1 x 1.9mm, total weight estimated as 2.20 carats, diamond diameters each approx 1.5mm, total weight estimated as 0.02 carats, gross weight 3.1g, not marked but tested as 18ct **£300-500**

2278 A yellow and white metal, sapphire and diamond open circular brooch, with bow detail and a roller catch fastening, featuring 12 round sapphires with dimensions between approx 3 x 2.05mm and 3.8 x 2.1mm, total weight estimated as 2.5 carats, the bow set with 32 Old European cut diamonds, dimensions between approx 1.3 x 1.15mm and 1.75 x 1.35mm, total weight estimated as 0.61 carats, assessed mounted collectively colour I to J and clarity SI1 to SI2, brooch diameter 30mm, gross weight 7.3g, not hallmarked but tested as 15ct gold and silver **£250-350**

2279 A yellow and white metal pearl and diamond circular brooch, having an oval painted centre depicting a female figure with a dancing child against a cream guilloche enamel background, with foliate border set with 114 approx 0.6 x 1.3mm rose cut diamonds and an

outer border of 49 approx 2.1 to 2.15mm seed pearls, threaded on a wire with a 2mm Old European cut diamond, brooch diameter 33mm, pendant bale attached, gross weight 10.1g, not hallmarked but tested as 18ct gold **£400-600**

2280 A yellow metal square shaped peridot, amethyst, and half pearl brooch, comprising a centre cluster of seven 3.6mm half pearls within a scrollwork mount, with four oval peridots alternating with four round amethysts, having roller catch fastening, peridot dimensions each approx 3.85 x 2.2mm, total weight estimated as 0.72 carats, brooch dimensions 35 x 25mm, gross weight 7g, not marked but tested as approx 9ct gold **£150-200**

2281 A yellow metal enamel circular brooch, having a flower cluster to the centre set with a 3.5mm round green garnet and five 2.4mm round brilliant cut diamonds, with five white enamel petals radiating from the centre and a green guilloche enamel background, with safety chip fastening, brooch dia, Peter 30mm, gross weight 17.2g, not hallmarked but tested as 18ct gold **£500-800**

2282 A Chinese 18ct gold bar brooch, arranged as three Hanzi characters, stamped with makers mark WN and 18, 4.5cm, 5.3g **£200-250**

2283 Two yellow metal mounted and painted porcelain portrait brooches, one featuring a classical lady within a scalloped border, 48 x 37mm, the other depicting a child with an apple with a scalloped border, 48 x 35mm, gross weight 17.7g, neither hallmarked but stamped and tested as 18ct gold **£300-400**

2284 A white metal diamond oval hinged bangle, featuring nine circular clusters each with seven round brilliant cut diamonds alternating with eight pairs of baguette cut diamonds, all in claw settings, with box clasp and two figure-of-eight safety catches, brilliant cut diamond diameters each approx 2mm, baguette cut diamond dimensions each approx 2 x 1.2 x 1.6mm, total diamond weight estimated as 2.37 carats, assessed mounted collectively colour H to I and clarity SI1 to SI2, bangle width 3.6mm, diamond 56 x 50mm, gross weight 21.1g, stamped and tested as 18ct **£1,400-1,800**

2285 A 9ct yellow gold diamond hinged bangle, having angled front section channel set with 39 round brilliant

cut diamonds, with box clasp and two figure-of-eight catches, diamond diameters each approx 1.8mm, total weight estimated as 0.78 carats, assessed mounted collectively colour J to K and clarity SI2 to I1, inner diameter 60 x 51mm, gross weight 19.3g, hallmarked 9ct, Sheffield import **£600-800**

2286 **A 15ct gold hinged bangle**, with textured detail to the outer side and safety chain, dia.6.5cm, 10g **£300-400**

2287 **An 18ct white gold diamond solitaire ring**, featuring a round brilliant cut diamond in a high six-claw setting, diamond diameters approx 5.25mm, weight estimated as 0.53 carats, assessed mounted colour H to I and clarity VS1 to VS2, size N, gross weight 2.6g, hallmarked 18ct, Sheffield import 1995, sponsor MLd **£300-400**

2288 **A yellow metal diamond solitaire ring**, comprising an old mine cut diamond in a claw setting, attached to a 4.4mm D-shaped wedding band engraved JP 23.8.98 to the inside, diamond dimensions approx 5.99 x 5.2 x 3.85mm, weight estimated as 0.93 carats, assessed mounted colour I to J and clarity VS1 to VS2, not hallmarked but tested as approx 14ct gold **£700-900**

2289 **An 18ct white gold diamond solitaire ring**, having a round brilliant cut diamond in a six-claw setting, diamond diameter approx 5.55mm, weight estimated as 0.63 carats, assessed mounted colour H to I and clarity VS1 to VS2, size M, gross weight 3.2g, hallmarked 18ct, Sheffield import 1985, sponsor MLd **£400-500**

2290 **A platinum, diamond solitaire ring**, featuring a round brilliant cut diamond in a six-claw setting, diamond dimensions approx 7.1 x 7.12 x 4.45mm, weight estimated as 1.37 carats, assessed mounted colour K to L and clarity SI1 to SI2, size J½, gross weight 4.9g, hallmarked platinum, Birmingham, sponsor DC **£1,200-1,500**

2291 **A 9ct yellow gold gent's diamond solitaire ring**, featuring a round brilliant cut diamond claw set within an open scrollwork mount, diamond dimensions approx 8.42 x 5.4mm, weight estimated as 2.45 carats, assessed mounted colour H to I and clarity I2 to I3, size Z, gross weight 5.5g, hallmarked 9ct, London 1976 **£2,000-2,500**

2292 **A Cartier d'Amour 18ct white gold diamond bracelet**, circa 2022, the bezel set brilliant cut diamond weighing approx. 0.07ct, 20cm, 2.3g, with box, outer box, and certificate of authenticity, No. 8278949 **£500-700**

2293 **A Tiffany & Co platinum diamond set anchor pendant**, comprising 26 round brilliant cut diamonds in grain settings, attached to a trace link chain with signed tag and bolt ring clasp, diamond dimensions between approx 1.15 x 0.7mm and 2.8 x 1.8mm, total weight estimated as 0.56 carats, assessed mounted collectively colour H to I and clarity VS1 to VS2, pendant length 22mm, chain length 410mm, width 1.1mm, gross weight 6.3g, not hallmarked but stamped and tested as platinum, stamped Tiffany & Co on chain and pendant, with box **£800-1,000**

2294 **A Chopard 18ct white gold Happy Diamond pendant**, comprising a 2.05mm round brilliant cut diamond within 10mm square surround, attached to a round belcher link chain with lobster clasp, chain length 390mm, w.1.7mm, gross weight 13g, bearing French 18ct hallmarks, signed Chopard and numbered 9875929 79/2938.20 **£500-700**

2295 **A pair of Chopard 18ct white gold Happy Diamond stud earrings**, each having a 2.05mm round brilliant cut diamond within a 10mm square surround, with post and alpha backs, gross weight 10g, signed Chopard 750, numbered 9865759 83.2938.20, tested as 18ct gold **£500-700**

2296 **A Chopard 18ct gold ridged square section dress ring**, w.4.35mm, signed Chopard and numbered 82/7407. 3039239, size N, gross weight 7.3g, stamped and tested as 18ct gold **£250-350**

2297 **A Chopard 18ct white gold Happy Diamond oval hinged bangle**, featuring a 2.2mm round brilliant cut diamond in a heavy square surround, bangle approx dia. 60 x 50mm, bangle w.5.9mm, gross weight 32g, bearing French 18ct hallmarks, signed Chopard and numbered 9874899 85/2938.20 **£1,000-1,200**

2298 **An 18ct yellow gold Theo Fennell diamond pendant in the form of a cockle**, set with 51 graduated round brilliant cut diamonds, with a clip bale and attached to a Franco chain with trigger clasp, diamond diameters between approx 0.65 and 2.15mm, total

weight estimated as 0.56 carats, assessed mounted collectively colour G to H and clarity VS1 to VS2, pendant length 30mm, chain length 490mm, width 1.1mm, gross weight 12.1g, hallmarked 18ct, London 2015, with box **£1,000-1,500**

2299 **An 18ct white gold diamond horn pendant by Theo Fennell**, featuring 149 fancy yellow brown round brilliant cut diamonds, with 42 round brilliant cut diamonds in the top and bale, all in pavé settings, diamond diameters between approx 1.4 and 1.5mm, total weight estimated as 1.91 carats, pendant length 42mm, gross weight 9.0g, hallmarked 18ct, London 2006, sponsor TF **£1,200-1,800**



2301 **John Stephens of London - a George III pair cased pocket watch**, the outer case in tortoiseshell and the inner case in silver, assayed London 1794, white enamel dial with Roman and Arabic dials, chain driven verge fusee movement with pierced balance clock, signed to the backplate and numbered 1139, dia.5cm **£150-200**

2302 **William Dent of London - a George III pair cased pocket watch**, having tortoiseshell outer case and silver inner case (with lion rampant but date letter worn), white enamel Arabic dial, keywind chain driven verge fusee movement with pierced balance cock, signed to the backplate and numbered 3125, dia.4.9cm **£200-300**

2303 **A George III silver pair cased pocket watch**, the outer repousse decorated white metal case with an allegorical scene, plain silver inner case, white enamel Roman dial with outer Arabic dial, chain driven verge fusee movement with pierced balance cock (movement a/f), indistinctly signed with London maker to the backplate, case assayed London 1797, dia.5.2cm **£100-150**

2304 **Edward Morgan of London - a George III silver pair cased pocket watch**, both cases being plain, having white enamel Arabic dial, chain driven verge fusee movement with pierced balance cock, signed and numbered 4338 to the backplate, both cases assayed London 1803, dia.5.6cm **£100-150**

2305 **A mid Victorian silver keywind full hunter pocket watch**, having a round white Roman dial and engraved with a shield to the front of the case, dia.53mm, gross weight 116.7g, hallmarked sterling silver London 1862, sponsor WCS, movement numbered 46869 and engraved Thos Amore, Worthing **£120-160**

2306 **A continental 18ct gold cased half hunter quarter repeating chronograph pocket watch**, having an unsigned white enamel dial, centre sweep seconds and stop/start function, further subsidiary seconds dial, fine outer scale, the keyless movement having two hammers striking one outer gong, gilt metal inner back cover, gross weight 134.5g, dia.56mm **£1,000-1,500**

2307 **A Swiss 18ct gold cased gent's pocket watch**, having engine turned and engraved case, gilded Roman dial, gilt metal dust cover, Baume keywind movement numbered 89337, dia.4cm, 41.5g; together with another continental 18ct gold cased pocket watch, the case with engraved back, plain gold inner back cover, gilded dial (lacking minute hand and glass), keywind movement, dia.3.7cm, 33.6g (2) **£300-500**

2308 **An early 20th century Swiss nickel cased Goliath pocket watch**, having eight-day keyless minute repeating movement, unsigned, the Roman Arabic dial with subsidiary seconds dial, backplate numbered 7032, dia.8cm **£200-400**

2309 **A Zenith gent's 9ct gold cased pocket watch**, having an unsigned white enamel Arabic dial, subsidiary seconds dial, back cover with engraved monogram and with gold inner back cover, keyless lever movement, backplate stamped Zenith and numbered 1961932, 79g, dia.4.8cm **£300-500**

2310 **Wightwick & Moss of Ludgate Street, London - a gold plated pair cased pocket watch**, the cases being plain, having a convex white enamel Arabic dial, keywind verge fusee movement with pierced balance cock, backplate signed and numbered 3067, dia.5.7cm, on gold plated watch chain, 26.5cm **£80-120**

2311 **A 14ct gold L Bader keyless open face pocket watch**, with cream Arabic dial and sub-dial at 6, case No. 328290, stamped and tested as 14ct, having 15-jewel movement, case dia.45mm, gross weight 47.3g, attached to a yellow metal curb link Albert chain with a swivel and bolt ring clasp, length 395mm, width 3.4mm, gross weight 7g, not marked but tested as 18ct gold, with original box **£600-900**

2312 **Thomas Russell & Son of Liverpool, a gent's 18ct gold cased pocket chronograph watch**, having a signed white enamel Roman dial with fine outer scale, elliptical date dial at 6 o'clock, and centre seconds hand with stop/start chronograph function, keyless lever movement No. 107923, the case with engraved outer bezel, plain back cover, gold inner back cover, assayed Chester 1903, dia. 5.5cm, 141.3g, together with a **15ct gold trombone link watch chain** with single lobster claw clasp and Albert, and having associated attached to one end 9ct gold lobster claw clasp single ring and bloodstone & agate set swivel fob pendant, length 40.5cm, 15ct weighing approx 42.1g, 9 ct to include hardstones, weighing approx 8g (2) **£2,000-3,000**



2313 **A Beuch Girod lady's 9ct gold manual wind wristwatch**, having a signed "tiger's eye" oval dial, dia. 28mm within a spiral reeded surround to a mesh link bracelet with hinged clasp, assayed London 1976, length 18.4mm, 49.4g **£500-800**

2314 **A 9ct white gold lady's Tudor Royal manual wind diamond set cocktail watch**, having a round white baton dial and bezel set with 30 single cut diamonds, attached to a herringbone link bracelet with ladder clasp, diamond diameters between approx 1.15 and 1.65mm,

total weight estimated as 0.16 carats, case diameter 18mm, bracelet width 3.65mm, overall length 195mm, with 17-jewel signed movement, inner case numbered 35425, gross weight 16.3g, hallmarked 9ct, London 1968, sponsor DS&S **£600-800**

2315 **A Tag Heuer lady's stainless steel Formula One bracelet watch**, having factory diamond set signed black dial and ceramic bezel, Ref. WAH1312, serial No. RPL2987, quartz movement, screw down back cover, case dia. 32mm, and on integral bi-metal bracelet with double folding clasp, circa 2012, with box, papers, and original purchase receipt, spare bracelet links **£500-700**

2316 **A Tag Heuer Kirium Formula 1 stainless steel bracelet watch**, ref:CL111A-0, circa 2015, with digital and analogue display, rotating bezel, quartz movement, case dia.41.5mm (including crown guards), screw-down back cover, on integral bracelet with hinged clasp, sold with spare steel bracelet, box, outer box, and suede pouch, instruction booklet and guarantee card **£200-300**

2317 **Jaeger LeCoultre for Kutchinsky, a lady's 18ct gold bracelet watch**, having a signed silvered dial (badly discoloured) with baton and dot markers, dial dia. 11mm, manual wind movement, case back signed Kutchinsky, to a fancy mesh link bracelet with rolled edges, the clasp stamped Kutchinsky, and with 18ct gold hallmarks, 17.5cm, 38.6g **£1,400-1,800**

2318 **A Jaeger le Coultre Reverso steel cased quartz wristwatch**, with rectangular silver Arabic dial and integral 5-row brick link bracelet, with signed folding clasp, case dimensions 34 x 20mm, overall length 190mm, bracelet w.15mm, case ref. 260.8.08. 1768607, gross weight 56.6g **£1,000-1,500**

2319 **Vacheron & Constantin of Geneve - a gent's 18ct gold bracelet watch**, ref: 2020, having a signed champagne dial with baton markers, date aperture at 3 o'clock, cal.1121 automatic 36-jewel Swiss movement, case dia.32mm, on integral meshlink bracelet with hinged deployment clasp, 76g **£2,000-3,000**

2320 **A gent's Revue Thommen steel cased Airspeed automatic chronometer**, having a signed black day/date dial with triple subsidiary dials, rotating bezel, sweep centre seconds and full chronometer functions, screw-down back cover, case dia.4cm, on stitched leather bracelet **£250-350**

2321 **A gent's Revue Thommen steel cased Airspeed automatic wristwatch**, having a signed black dial, sweep centre seconds, outer date dial with orange-tipped hand, screw-down back cover, case dia.3.9cm, on stitched leather bracelet **£150-200**

2322 **A De Grisogono Samsung Gear S2 smart watch**, having a 41mm blackened DLC (diamond-like carbon) steel case, the 15ct rose gold rotating bezel set with 56 white diamonds, the lugs and case sides set with 71 black diamonds, black dial, having stingray leather strap with hinged deployment clasp, sold with original box, cushion and outer box, associated USB charging port, no papers **£2,500-3,000**

2323 **An Ulysse Nardin gent's steel cased marine chronometer**, ref:263-22, circa 2001, having a signed silvered dial, with subsidiary seconds dial and power reserve dial, raised Arabic numerals and luminous tipped hands, automatic movement, screw-down case, 200m water resistant, watch number 2277, case numbered 464737, case dia.38mm, on integral steel bracelet with hinge deployment clasp, with box, outer box, guarantee card and spare bracelet link **£800-1,200**

2324 **An Arcadia AC-01 gent's steel cased chronograph wristwatch**, limited edition No.186/275, having a signed black dial with luminous baton markers, centre seconds, four subsidiary dials and date aperture at 6 o'clock, crystal back cover showing automatic movement, case dia.45mm, on stitched black leather bracelet with brushed steel hinged deployment clasp, with original pouch and setting key *Note: The luxury Swiss brand Arcadia Watches originally ran from 1858-1968, until the advent of quartz movements heralded its demise. It was relaunched in 2007 with their first watch, the AC01, being released in 2010 and limited to an edition of 275 watches.* **£1,000-1,400**



2325 **A lady's Omega Constellation steel cased quartz wristwatch**, ref. 14655100, No. 57819930, circa 2003, having a signed black dial with baton markers, diamond set bezel arranged as 30 brilliant cuts, total diamond weight 0.33 carats, colour Top Wesselton and clarity VVS, on integral bracelet with hinged deployment clasp, case dia.23mm, with box, suede pouch, international warranty card and Omega precious stones certificate **£400-600**

2326 **A lady's Omega Constellation bi-metal quartz watch**, having round mother of pearl dot dial and bezel with Roman numerals, attached to an integral bar link bracelet with signed folding clasp, case dia.22mm, overall length 160mm, bracelet width 15 to 11mm, model ref. 59364803, clasp ref. 6553/865, gross weight 42g **£300-500**

2327 **An Omega Constellation Mini lady's quartz stainless steel and 18ct gold bracelet watch**, Ref. 12623000, watch No. 90338598, circa 2009, having a signed white dial with gold Roman bezel, cal.1456 quartz movement, case dia. 24mm on integral bracelet with hinge deployment clasp, with box, suede pouch, cushion, outer box, international warranty card, pictogram card, booklet, and Omega suede wallet **£300-500**

2328 **A gent's Omega Constellation steel cased automatic chronometer wristwatch**, ref. 15024000, No. 80568468, circa 2003, cal. 1120 automatic movement, signed black dial with baton markers, date aperture, and fixed bezel, on integral bracelet with hinged deployment clasp, case dia.36mm, with box, spare bracelet link, wallet with international warranty card, chronometer certificate and pictograms card **£400-600**

2329 **An Omega 18ct gold cased chronometre officially certified gent's wristwatch**, having a signed champagne dial with quarter Arabic numerals, manual wind cal.283 17-jewel movement numbered 12464778, in 18ct gold Dennison case numbered 13302, case assayed Birmingham 1977, case dia.35mm, no bracelet, 37.3g **£600-800**

2330 **A gent's Omega Seamaster Professional steel cased quartz wristwatch**, ref. 25618000, No. 58163593, circa 2003, cal. 1538 quartz movement, the signed wavy dial with luminous baton markers, hands and sweep centre seconds, rotating bezel, date aperture, on integral

steel bracelet with hinged deployment clasp, case dia.36mm, with wallet, international warranty card and pictogram card **£700-1,000**

2331 A gent's Omega Constellation Automatic Chronometer officially certified 18ct gold case bracelet watch Ref. BA3685456, movement No. 27633542, circa 1970, having a signed day/date dial with baton markers, screw down back cover, case dia. 35mm, on Omega 18ct gold heavy mesh link bracelet with hinge deployment clasp, 18cm, 121.1g, with box and papers **£2,500-4,000**

2332 A lady's Rolex Oyster Perpetual steel cased automatic wristwatch Ref. 6723, serial No. 3754378, circa 1974, having a signed silvered dial with baton markers, screw down back cover, case dia. 25mm on Rolex Jubilee bracelet with hinge deployment clasp **£800-1,200**

2333 A vintage Rolex ladies 18ct gold case bracelet watch, having a signed square champagne dial with baton markers and Rolex crown at 12 o'clock, manual wind Rolex movement, set with 17 rubies, the Rolex case stamped 18K 750 and numbered 4995 480, the 16mm case with proud lugs for an 18ct gold double snake link bracelet with hinged clasp, 16cm, 26.7g **£600-800**

2334 A gent's Rolex Oyster Perpetual officially certified chronometer steel cased wristwatch, having a signed silvered dial with baton markers, automatic movement, ref. 6564 and numbered 288152, case dia.34mm, on replacement expanding link bracelet, no box or papers **£1,400-1,800**

2335 A gent's Rolex Oyster Precision stainless steel manual wind bracelet watch, ref:6426, circa 1985, having signed blue dial with baton markers, screw-down crown, case dia.35mm, Rolex Oyster bracelet with hinged clasp, with box, outer box, papers to include guarantee certificate, original purchase receipt, service receipt from 1990, and Rolex booklet **£1,200-1,800**

2336 A gent's Rolex Oyster Perpetual Air King Precision Steel Cased Automatic Bracelet Wristwatch Ref. 5500, Serial no. 5117865, circa 1978, having signed silvered dial with baton markers, screw down back cover, case dia. 34mm on oyster bracelet, with hinge deployment clasp, bracelet numbered 78350 19 **£1,400-1,800**

2337 A gents Everose gold Rolex Oyster Perpetual DayDate superlative chronometer officially certified wristwatch, with meteorite dial set with eight round brilliant and two baguette cut diamonds and fluted bezel, automatic movement, President bracelet and crown clasp, model ref. 118255, serial No. Z366639, clasp ref. 15/301OP10, case dia.36mm, bracelet length 220mm, width 20 to 18mm, gross weight 176.5g, hallmarked 18ct Austria, with box and outer box **£18,000-22,000**

2338 A 1953 gent's Rolex oyster perpetual Explorer steel cased automatic wristwatch, Ref. 6150 No. 945097, the signed black dial with luminous triangular baton and quarter Arabic numerals, gilt finished signature and minute track, Mercedes luminous hands with centre sweep seconds, automatic movement, fixed crown, screw down bubble back cover, numbered inside 6150, and dated IV53, case dia. 35mm, on Rolex steel expanding link bracelet with hinge deployment clasp. Note - some collectors refer to the reference as a "Pre-Explorer", since it was only manufactured in 1953, the Pre-Explorer dial was firstly marked Precision, and like this example shows Rolex started after that signing the dial with Explorer in the early stages. The Explorer model was marketed introduced firstly for adventurers and in particular, mountain climbers, it was launched in 1953 to celebrate Edmund Hillary and Tensing Norgay's ascension of Mount Everest who wore Rolex Oyster Perpetual wristwatches during their historic climb. **£20,000-30,000**



2339 **A gent's Rolex stainless steel automatic chronograph bracelet watch Cosmograph Daytona** Ref. 116500LN serial No. OER45657, purchased 08.12.2020, the white dial with applied luminous filled bullet hour markers, with black Cerachrom bezel with tachymeter scale, black outer 1/5 second divisions, triple subsidiary panda-eye dials, for seconds, 30 minute and 12 hour recording, centre chronograph hand Cal. 4130 44-jewel automatic movement, case dia. 39mm, on brushed and polished oyster bracelet with folding clasp, stamped L7U, with box, outer box, spare bracelet link, swing tag, guarantee card, booklets **£20,000-24,000**

2340 **A collection of Rolex branded retailers accessories**, all being in very good to mint condition, to include three pairs of silk gloves in plastic slips, three cream card boxes, one green card box, watch display stand, mixed ephemera to include brochures, bezel guards, non-branded clear plastic and polystyrene filled watch cases **£250-400**

2341 **A collection of Rolex branded retailers accessories**, all being in very good to mint condition, to include four pairs of silk gloves in plastic slips, velvet lined tray, green perspex desk weight, leather wallet, a quantity of bezel guards, three cream card boxes, one green card box, mixed ephemera to include various booklets, year brochures, etc; together with a collection of unbranded clear plastic polystyrene lined watch boxes **£400-600**

ENAMELLED WARES

2345 **A South Staffordshire enamel scent bottle**, late 18th century, in the form of a flowerhead, after Chelsea, having a gilt metal scrolled stopper, h.7.5cm, together with **another**, decorated with flowers, h.7cm (2) **£50-100**

2346 **A South Staffordshire enamel scent bottle etui**, late 18th century, relief moulded in the form of a tulip, containing a cut glass scent bottle, l.7.5cm, together with **another enamel scent bottle etui**, decorated with chevrons upon a blue ground, h.5cm (2) **£100-200**

2347 **A South Staffordshire enamel scent bottle etui**, late 18th century, decorated with portrait cartouches upon a green ground, having a fitted interior, lacking bottles, h.6cm, together with **another similar**, decorated with kite cartouches of flowers, h.6cm (2) **£100-200**

2348 **A South Staffordshire enamel combined scent bottle and bonbonniere**, late 18th century, decorated with cartouches of flowers upon a blue ground, h.8cm **£80-120**

2349 **A South Staffordshire enamel etui**, late 18th century, decorated with floral sprays, the lid lifting to reveal a gilt fitted interior and some contents, h.9.5cm **£150-250**

2350 **A South Staffordshire enamel etui**, late 18th century, of tapered form, decorated with cartouches of battle scenes upon a white ground, the lid opening to reveal a gilt fitted interior containing a full set of requisites, including toothpick, scissors, hook etc., h.10cm **£300-500**



2351 **A South Staffordshire enamel etui**, late 18th century, of tapered form, decorated with cartouches of classical scenes upon a pink ground, lacking interior, h.10cm **£100-200**

2352 **A South Staffordshire enamel etui**, late 18th century, of tapered form, decorated with cartouches of river landscapes upon a blue ground, lacking interior, h.9.5cm **£80-120**

2353 **A South Staffordshire enamel etui**, late 18th century, decorated with cartouches of rural landscapes upon a blue ground, the lid lifting to reveal a gilt fitted interior, only the knife present, h.10cm **£150-250**

2354 **A South Staffordshire enamel etui**, late 18th century, of tapered form, decorated with cartouches of harbour landscapes upon a pink ground, lacking interior, h.10cm, together with **another enamel etui**, late 18th century, relief decorated with flowers, having a gilt fitted interior, lacking contents, h.8cm (2) **£100-200**

2355 **A South Staffordshire enamel bodkin case**, late 18th century, decorated with flowers upon a pink ground, l.8cm, together with **another enamel cylindrical etui**, late 18th century, decorated with landscape cartouches upon a pink ground, 11.5cm (2) **£50-100**

2356 **A South Staffordshire enamel bodkin case**, late 18th century, decorated with cartouches of landscapes upon a green ground, l.11.5cm **£100-200**

2357 **A collection of South Staffordshire enamel wares**, to include **a scent bottle etui**, late 18th century, relief decorated with floral sprays, containing a glass scent bottle, h.5.5cm, together with **a nutmeg grater**, late 18th century, decorated with floral cartouches upon a green ground, l.5cm, **a blue enamel patch box**, dia.2cm, and **a box lid**, decorated with a courting couple, dia.4cm (4) **£50-100**

2358 **A South Staffordshire enamel nutmeg grater**, late 18th century, of egg form, inscribed *Love constitutes the value*, l.4.5cm **£120-180**

2359 **A South Staffordshire enamel nutmeg grater**, late 18th century, of egg form, polychrome, gilt and white enamel decoration, l.4.5cm **£200-400**



2360 **A South Staffordshire enamel nutmeg grater**, late 18th century, in the form of an egg, inscribed *Who opens this must have a kiss*, l.4.5cm **£120-180**

2361 **A South Staffordshire enamel nutmeg grater**, late 18th century, of egg form, decorated with blue and yellow swags, l.4cm, together with **another similar smaller yellow enamel example**, containing a miniature glass bottle, l.2.5cm (2) **£100-200**

2362 **A South Staffordshire pink enamel nutmeg grater**, late 18th century, of egg form, inscribed *A friend's gift*, l.4.5cm **£120-180**

2363 **A South Staffordshire enamel nutmeg grater**, late 18th century, of egg form, decorated with flowers, l.4cm **£80-120**

2364 **A South Staffordshire enamel hinged box and cover**, late 18th century, of egg form, decorated with cartouches of fruit upon a blue ground, l.7cm **£100-150**

2365 **A South Staffordshire enamel box**, late 18th century, in the form of a bird's egg, l.3cm, together with **an enamel decorated yellow metal pendant vinaigrette**, decorated with birds flying, l.2.5cm (2) **£100-200**

2366 **A South Staffordshire enamel patch box**, late 18th century, of oval form, the lid inscribed *A Bath Joy*, w.4cm, together with **another similar**, inscribed with a romantic motto, w.4.5cm, and **an enamel bonbonniere**, in the form of a pocket watch, dia.4.5cm (3) **£100-200**

2367 **A South Staffordshire enamel patch box**, late 18th century, of oval form, inscribed *Sacred to friendship*, w.4cm, together with **three others similar** (4) **£100-200**

2368 **A South Staffordshire enamel patch box**, late 18th century, of circular form, inscribed *A trifle from Norwich*, dia.3cm, together with three others similar inscribed *A trifle from Epping*, *A trifle from London* and *Marquis Wellington* (4) **£100-200**

2369 **A South Staffordshire enamel patch box**, late 18th century, of circular form, decorated with flowers, dia.5cm, together with **three others similar** (4) **£100-200**

- 2370 **A South Staffordshire enamel patch box**, late 18th century, decorated with flowers, w.5.5cm, together with four others similar (5) **£100-200**
- 2371 **A South Staffordshire enamel box**, late 18th century, inscribed *Peace Reigns Here* and decorated with Masonic symbols, w.8cm **£150-250**
- 2372 **A South Staffordshire enamel patch box**, late 18th century, of oval form, the lid decorated with two ambigram profile portraits, w.4.5cm, together with **three other South Staffordshire enamel patch boxes** (4) **£100-200**
- 2373 **A South Staffordshire enamel bougie box**, late 18th century, of drum form, enamel decorated with cartouches of flowers upon a blue ground, h.6.5cm **£200-300**
- 2374 **A South Staffordshire enamel patch box**, late 18th century, of rectangular shape, inscribed *How sweets the love that meets return*, w.4cm, together with four others with similar mottos (5) **£100-200**
- 2375 **A South Staffordshire enamel patch box**, late 18th century, of circular form, inscribed *A trifle from Bardfield*, dia.2.5cm, together with three others similar (4) **£100-200**
- 2376 **A South Staffordshire enamel patch box**, late 18th century, of oval form, inscribed *Let sword be turned into plough, shares and spears into reaping hooks*, w.5.5cm, together with **three others similar** (4) **£100-200**
- 2377 **A South Staffordshire enamel patch box**, late 18th century, of oval form, the lid inscribed *A trifle from Margate*, w.5.5cm, together with **three others similar**, inscribed *Love constitutes the value*, *Blest with thee my cares are free*, and *A present from Whitehall London* (4) **£100-200**
- 2378 **A South Staffordshire enamel box**, late 18th century, of oval form, decorated with a bird and basket of flowers, w.6cm, together with **three others enamel boxes** (4) **£150-250**
- 2379 **A South Staffordshire enamel patch box**, late 18th century, of oval form, inscribed *A trifle from Bath (Abbey)*, w.4.5cm, together with three others similar inscribed *A present from Windsor*, *A Trifle from Nottingham* and *St Ann's Well Buxton* (4) **£100-200**
- 2380 **A South Staffordshire enamel patch box**, late 18th century, the lid decorated with a floral spray cartouche upon a yellow ground, w.9cm, containing a photograph of a very similar example included in The Schreiber Collection, which was donated to the South Kensington Museum **£100-200**
- 2381 **A pair of South Staffordshire enamel patch boxes**, late 18th century, each of oval form, inscribed *Love constitutes the value* and *This I intend a gift to my friend*, w.4cm, together with two others with similar mottos (4) **£100-200**
- 2382 **A pair of South Staffordshire enamel patch boxes**, late 18th century, of rectangular form, each decorated with a landscape, w.5.5cm, together with **two others similar** (4) **£100-200**
- 2383 **A South Staffordshire enamel patch box**, late 18th century, the lid decorated with a monochrome landscape, w.4cm, together with three others similar (4) **£150-250**
- 2384 **A South Staffordshire enamel patch box**, late 18th century, of oval form, decorated with a fishing scene, l.5.5cm, together with **three others similar** (4) **£100-200**
- 2385 **A South Staffordshire enamel patch box**, late 18th century, inscribed *This and the giver are thine forever*, w.4cm, together with four others similar inscribed with similar mottos (5) **£100-200**
- 2386 **A South Staffordshire enamel box**, late 18th century, of egg shape, decorated with roses on a pink ground, l.5.5cm, together with **another similar**, lacking mounts (2) **£80-120**
- 2387 **A South Staffordshire enamel patch box**, late 18th century, the lid decorated with a portrait of a girl, w.7.5cm, together with **three others**, each decorated with a portrait of a lady (4) **£100-200**
- 2388 **Three South Staffordshire enamel table salts**, late 18th century, decorated with cartouches of landscapes and flowers upon blue and green grounds and tripod feet, each dia.7cm **£50-100**

2389 **A South Staffordshire enamel bonbonniere**, late 18th century, in the form of a hare, the lid decorated with a country landscape, w.4cm, together with **another in the form of a canary**, h.4cm (2) **£100-200**

2390 **A South Staffordshire enamel bonbonniere**, late 18th century, in the form of a bird, having an unmarked white metal lid, h.4cm **£50-100**

2391 **A South Staffordshire enamel bonbonniere**, late 18th century, in the form of the head of a leopard or cheetah, l.5.5cm **£200-300**



2392 **A continental white metal and enamel snuff box**, late 18th century, of clam shell moulded shape, gilt decorated with classical figures and profiles, w.7.5cm **£100-200**

2393 **A German enamel oval box**, 18th century, inscribed *An.1770 dadie Scheinhait Mode War*, depicting a woman having her hair styled extremely high by a groom upon a ladder, w.13cm **£100-150**

2394 **An enamel and white metal double-ended snuff box**, probably Dutch or German, mid-18th century, of waisted form, decorated with classical figures, h.7.5cm **£500-800**

2395 **A Chelsea porcelain snuff box**, circa 1754, in the form of a group of children playing with a dog, lacking mount and lid, h.6cm, together with **a similar Chelsea porcelain snuff box**, in the form of a family of birds, h.5cm (2) **£200-300**

2396 **A Samson of Paris enamel pocket pot purri**, 19th century, the pierced lid decorated with flowers, dia.4.5cm, together with **a similar wax seal**, having a pierced handle, h.7.5cm (2) **£40-80**

2397 **A porcelain trinket box**, late 18th/early 19th century, enamel decorated with courting couples, w.8cm, together with **another similar**, enamel decorated with flowers, w.8cm (2) **£50-100**

2398 **An enamel trinket box**, late 18th/early 19th century, decorated with cartouches of flowers upon a pink ground, the interior of the lid decorated with a half-length portrait of a lady, w.8.5cm **£80-120**

2399 **An enamel trinket box**, late 18th century, of rectangular form, the lid decorated with a townscape with a courting couple, w.7.5cm, together with **a porcelain trinket box**, enamel decorated with flowers, h.6cm (2) **£80-120**

2400 **A porcelain trinket box**, late 18th/early 19th century, of triangular form, enamel decorated with hunting scenes, w.6.5cm **£100-200**

OBJET D'ART

2403 **A 19th century travelling perfume case modelled as a walnut**, having hinged action (hinge a/f), opening to reveal two miniature faceted Bristol blue glass scent bottles in velvet and engraved gilt metal fitted interior, w.4.8cm, probably French *Note: A similar example can be found in the Science Museum, object No.A642283* **£150-250**



2404 **A blue polished agate and gilt metal trinket box**, 19th century, of rectangular form, standing upon four ball feet, w.6.5cm, together with another similar (2) **£50-100**

2405 **A George III silver and mother of pearl bound travelling pocket knife and fork set**, each with fold-out action bright cut engraved blades, in gilt tooled leather travel case, 8cm; together with another similar example being tortoiseshell bound and lacking travel case (2) **£80-120**

2406 **A cased Montblanc Meisterstuck Solitaire silver fountain pen**, in Barley finish with alternating smooth stripes, having 4810 18k 750 nib, the cap having white Mont Blanc star and having 925 silver stamps, the clip ring bearing serial number PD1961344 GERMANY METAL, length 13.5cm (capped), in original silk lined fitted case, service guide, piston converter and unopened polishing cloth, in further outer card box bearing Model No.23644 to the label **£300-400**



2407 **A bronze spear head**, having prominent midrib to the blade and tapered pierced push tang, length 17cm, 55.4g **£50-80**

2408 **An engraved yellow metal thimble**, unmarked but tests as 9ct gold, dia.15mm, gross weight 4.4g, within a fitted case **£80-120**

2409 **A Victorian yellow metal thimble**, having a Greek key border and annotated reserve, unmarked but tests as 18ct gold, 5g **£150-200**

2410 **A yellow metal engraved thimble**, with leaf work detail around base, dia.15mm, gross weight 4.4g, not hallmarked but stamped 18 and tested as 18ct gold **£150-200**

2411 **A gilt bronze and cut glass table centrepiece**, 19th century, in the rococo taste, relief decorated with flowerheads and C scrolls, h.31cm **£100-200**

2412 **A George III mahogany and inlaid cutlery box**, of typical serpentine form, the hinged cover opening to reveal original fitted interior with chequer stringing, w.23cm **£100-150**

2413 **A Victorian coromandel and silver plated miniature three-bottle tantalus**, with Betjemanns patent action, the bottles each with hobnail cut decoration, one with associated silver collar annotated for Whisky (lacks key but opens and closes with good action), w.23.5cm **£100-150**

2414 **A mahogany games box**, 19th century, having a fitted interior and contents, including a chess board and pieces, bone dominoes, playing cards and draughts counters, w.39cm **£80-120**

2415 **An early 19th century Masonic mahogany black ball ballot box**, with two base drawers annotated in gilt for Ay and No, w.25.5cm **£120-180**

2416 **An Austrian enamel and ebonised miniature table cabinet**, with gilt metal mounts, the twin doors opening to reveal six drawers, the panels each painted with allegorical figure scenes, the whole raised upon bracket feet, Vienna circa 1880, h.23cm, w.23cm, d.16cm *Note: With losses and for restoration* **£400-600**

2417 **A Japanese bronze table candlestick**, Meiji period (1868-1912), relief decorated with a dragon, h.25cm **£30-50**

2418 **A pair of Flemish 'Heemskirk' spun brass candlesticks**, of knopped form, with drip trays, h.19cm **£120-160**

2419 **A pair of neo-Classical gilt bronze three-branch wall lights**, wired for electricity, the backs surmounted with a pedestal urn with flaming torch finial, h.59cm (excluding fittings) **£200-300**

2420 **A pair of Rococo Revival gilt metal four-light candelabra**, each swept and adorned with acanthus leaves, drilled for electricity, back h.36cm, gross h.46cm (including fittings but excluding bulbs) **£200-300**

2421 **A pair of late 19th century bronze and gilt-bronze two-light candelabra**, each modelled as a standing female blackamoor, the arms with applied wings, all raised on circular Athemion cast bases, h.50cm **£250-400**

2422 **A large French Louis Philippe bronze and gilt-bronze table lamp**, second quarter 19th century, later wired and converted for electricity and having six lights below a perspex diffuser, with two further lights, the whole as a turned column with Anthemion leaf cast scrolling base to a triform rouge marble plinth, h.92cm **£400-600**

2423 **After Eutrope Bouret (1833-1906) - a classical bronze figure holding an book inscribed 'Histoire' and a quill**, signed Bouret to the column, h.31cm **£200-300**

2424 **A late 19th century French carved wood and canvas child-size mannequin torso and legs**, the feet with carved detail, stamped Paris and numbered 28, h.99cm **£100-150**

2425 **A box containing a quantity of Valenciennes lace**, in approximate lengths of six metres, four metres and two metres together with other lace fragments. Bought from the sale of H.I.M The Empress Eugenie, wife of Napoleon III. Together with auction catalogue, print of Empress Eugenie in her bridal dress contained in a Burberry box. Provenance- by descent, originally purchased as, lot 20 Christies sale of Lace, furs and fabrics, the property of H.I.M Empress Eugenie, on Tuesday July 24th, 1923, lot number still attached. **£300-500**

2426 **A half-length portrait miniature of the Countess of Mornington**, 19th century, watercolour on ivory, 9 x 7cm, housed in a brass frame, together with **a Dutch miniature coastal landscape**, after Allaert van Everdingen, oil on card, dia.7.5cm, **a print of the Thames tunnel**, dia.8cm, and **a pair of plaster profile portraits**, 19th century, largest h.6.5cm (5) Ivory submission ref (portrait): 9WNH4B2D **£100-200**

2427 **A French head and shoulders portrait miniature of a Napoleonic soldier**, 19th century, shown in military dress, enamels on porcelain, 5.5 x 4cm, housed in a moulded porcelain frame **£30-50**

2428 **A half-length portrait miniature of a young girl**, 19th century, shown standing holding a doll, watercolour on ivory, 5cm x 3.5cm, housed in an ebonised frame Ivory submission ref: 5B1BCVEY **£50-100**

2429 **A half-length portrait miniature of a lady**, late 18th/early 19th century, shown standing in a yellow jacket, watercolour on ivory, 6.5 x 5cm, housed in an ebonised frame Ivory submission ref: 25FMQ22X **£100-200**

2430 **Late 19th century English school - Pair; each being a portrait of a young Countess**, miniature watercolours on ivory, each framed as an oval (one frame badly damaged), 8 x 6cm Ivory submission ref: GKG93TDC **£300-400**

2431 **Attributed to Peter Paillou (circa 1745-1806)**, a head and shoulders portrait miniature of a gentleman, shown wearing a blue jacket with black collar and white stock, watercolour on ivory, 8.5 x 6.5cm, housed in a gilt frame, paper label to the reverse Ivory submission ref: 5GFGKM2K **£300-500**

2432 **In the manner of Isaac Moillon (1614-1673) - a Franco-Flemish tapestry panel**, 17th or early 18th century, allegorical figure scene, 132 x 159cm, in later silk border and back, the whole with repairs and significant fading **£2,000-3,000**



2433 **A Roman circular micromosaic plaque**, probably by Filippo Puglieschi (act. early 19th century), circa 1810, depicting an Asian leopard attacking a lamb, dia.6.8cm,

housed in a convex glazed yellow metal mount, pen tests as approximately 18ct gold **£1,000-2,000**



PICTURES & PRINTS

2438 **17th century Spanish school - The Crucifixion**, oil on canvas laid down on panel, 102 x 63cm **£500-700**

2439 **Late 17th century continental school - The mocking of Christ**, oil on canvas (recently re-lined and re-stretched), unframed, 62 x 48cm **£1,500-2,000**



2440 **After Filippo Lauri (1623-1694) - The martyrdom of St Stephen**, oil on canvas, 54 x 63cm **£300-400**

2441 **Christopher Saxton (c1542-1606) - County map of southern England to include Kent, Surrey, Sussex & Middlesex**, the original engraving by Remigius Hogenberg in 1579 and first appearing in Saxton's Atlas of England of Wales, this edition published 1642 by William Webb to include the arms of Charles I, with pictorial motifs for towns and villages, and ships off the south coast, hand-coloured and engraved, 41 x 55.5cm **£200-300**

2442 **David Cox Snr (1783-1859) - Off Calais**, watercolour, signed lower left, 17.5 x 27.5cm
Provenance: Thomas Agnew & Sons Ltd, London, No.10966 **£400-600**

2443 **H.M. Krause - Harbour scene in moonlight**, oil on canvas, signed and dated 1884 lower left, 25 x 35cm **£150-250**

2444 **After William Clark of Greenock (1803-1883) - Lone sailing boat in a swell off the coastline**, oil on canvas, 28 x 43cm **£80-120**

2445 **John Bonny (1874-1948) - Fishing at Pickett's Lock, Tottenham** oil on board, signed lower left, 40 x 50cm **£150-200**

2446 **Richard Henry Nibbs (1816-1893) - Shoreham**, oil on canvas (re-lined), signed lower right, 50 x 75cm **£500-700**

2447 **George Hodgson (1847-1921) - Kynance Cove, Cornwall**, watercolour, signed lower left, 54 x 73cm **£150-200**

2448 **After George Armfield - Terriers ratting**, oil on panel, 14 x 16.5cm **£100-150**

2449 **Charles Roper - Pair; Woodland flowers and A Coastal view**, oil on canvas, signed and dated 1881 lower right, 50 x 60cm **£100-150**

2450 **George Reid (1841-1913) - Marguerites**, oil on canvas, signed lower right, 50 x 70cm **£600-800**

2451 **Giuseppe Balesio (XIX-XX) - Musical Critics at Tivoli, Rome**, watercolour, signed and annotated 'Tivoli Roma' lower left, 54 x 36.5cm **£120-180**

2452 **Circle of Jacques Courtois - called Il Borgognone (1621-1676) Extensive battle scene with soldiers on horseback before a coastal fort**, oil on canvas, 34 x 54cm **£400-600**

2453 **William Wylie (1851-1931) - Pool of London**, etching, signed in pencil to the margin, 37 x 51.5cm **£100-150**

2454 **Camille Jean-Baptiste Corot (French 1796-1875) - Auvers, Rue du Village**, pencil drawing heightened with white chalks, with studio stamp lower right and exhibition label verso for Arhut Tooth & Sons Ltd of Bruton Street, London, for their Anthology Exhibition, June 1949, 15 x 23.5cm **£1,800-2,400**



2455 **Harry Becker (1865-1928) - Ploughing scene**, etching, 10 x 30cm **£120-180**

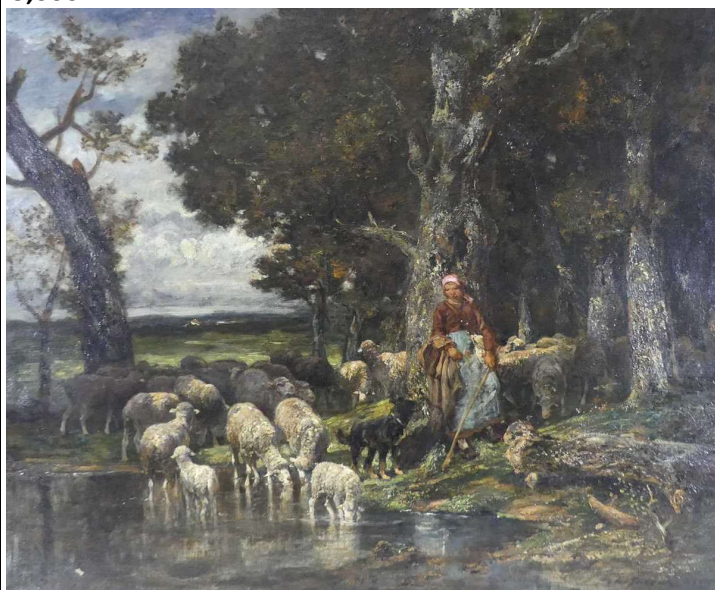
2456 **Charles Jacques (French 1813-1894) - Landscape / Bergere et Moutons (Shepherdess and Sheep)**, charcoal drawing heightened with white chalks, signed lower left, 20 x 14cm **£200-300**

2457 **Eugene Verboeckhoven (1798-1881) - Landscape with sheep and lone chicken**, oil on panel, signed and dated 1866 lower left, 13 x 18.5cm **£1,000-1,500**

2458 **W.P Cornish - Shepherds with flock in a landscape**, watercolour, signed lower left, 30 x 62cm **£60-80**

2459 **Charles Jacques (French 1813-1894) - Landscape with shepherdess and sheep watering**, oil on canvas,

signed and dated '91 lower right, further signed verso and with studio seal to the stretcher, 81 x 99cm **£2,000-3,000**



2460 **John Joseph Barker of Bath (1824-1904) - The Gamekeeper**, oil on canvas, 90 x 70cm (small tear with repair) **£120-180**

2461 **John Shepherd of Ipswich (fl.1879-1898) - Stoke Park, Ipswich**, oil on canvas, signed and dated 1885 lower left, 29 x 44cm **£150-200**

2462 **Attributed to Edward Robert Smythe (1810-1899) - Travellers before a timbered farmhouse**, oil on canvas, 36 x 48cm **£200-300**

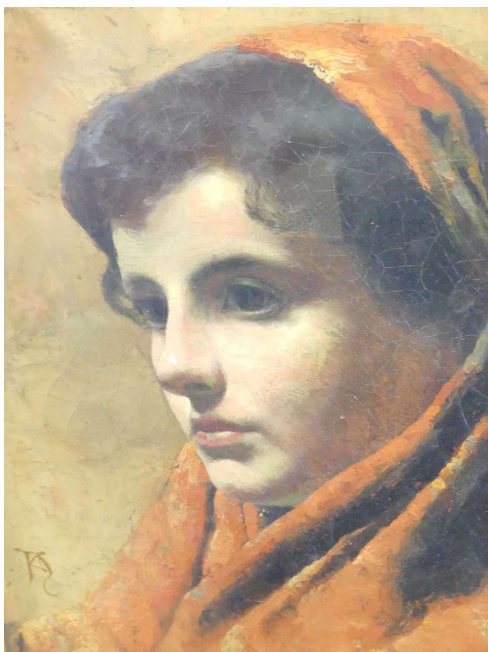
2463 **George Morland (1763-1804) - Figures, horses and livestock before a thatched cottage**, oil on panel, signed with monogram and dated 1794 lower left, 20 x 25.5cm **£120-180**

2464 **Alexis de Leeuw (Belgian c1822-1900) - Travellers with a string of horses in a landscape**, oil on canvas, re-lined, signed lower right, 75 x 126cm **£300-500**

2465 **A.B. Simpson - The Blue Vase**, oil on card, signed lower left, 25 x 17cm **£150-200**

2466 **Late 19th century English school - full-length portrait of a young woman seated in a landscape**, oil on canvas, indistinctly signed with monogram lower left, 40 x 30cm **£150-250**

2467 Circa 1900 school - Louiska, head and shoulders portrait of a gypsy girl wearing a headscarf, oil on canvas, signed with monogram lower left, 45.5 x 36cm £500-1,000



2468 H. Vincent - half-length portrait of a young woman wearing a rose buttonhole, oil on canvas, signed with monogram lower right, further signed and dated '97 verso, 60 x 49cm £300-500

2469 19th century English school - Pair; half-length portrait of a naval officer in uniform and his wife, oil on canvas, 89 x 68cm £400-600



2470 Early 19th century English school - Pair; bust portraits of a lady and gent, oil on oak panels, 27 x 20cm £200-300

2471 Richard Doyle (1824-1883) - A moonlit procession, watercolour, 26 x 37cm £400-600

2472 Richard Doyle (1824-1883) - The Hustings, watercolour, signed lower right, 16.5 x 52cm £800-1,200



2473 Richard Doyle (1824-1883) - The Ice-skaters, watercolour, signed lower right, 16 x 27cm £200-400

2474 After Henry Andrews (1794-1868)- Blindman's Buff, or Colin-Maillard, oil on canvas, framed as an oval, 70 x 61cm £500-700

2475 Victor Baird (1857-1924) - The Chicken Coop, oil on panel, signed lower right, 13 x 18cm £100-150

2476 Victor Baird (1857-1924) - The Duck Pond, oil on panel, signed lower left, 24 x 19cm £120-180

2477 Attributed to Charles Morris - The Duck Pond, oil on oak panel, 21 x 17cm £80-120

2478 § Edward Hersey (b.1948) - Swans and cygnets before a stone mill house, oil on canvas, signed lower right, 50 x 40cm £1,500-2,000



CLOCKS & BAROMETERS

2481 **A circa 1900 French lacquered brass carriage clock**, having an unsigned white enamel Roman dial, visible platform escapement, twin barrel going eight-day movement striking with a single hammer on a gong, the backplate stamped Paris and numbered 32161, h.11cm (handle down) **£60-90**

2482 **A circa 1900 French lacquered brass minuet carriage clock**, having an unsigned white enamel Roman dial, visible platform escapement, single barrel going eight-day movement, the backplate stamped Paris and numbered 26342, h.8cm, in original leather travelling case with winding key **£70-100**

2483 **A late 19th century ebonised and marquetry inlaid carriage clock**, having an unsigned white enamel dial with twin winding holes for an eight-day Bernard of Paris brass cylinder movement, having outside countwheel, long pendulum, and striking on a bell, h.21cm (handle down) **£80-120**

2484 **A circa 1900 lacquered brass carriage clock**, the case with applied Anthemian type decoration, having three-quarter turned fluted pilasters flanking silvered Arabic circular dial, with visible platform escapement, single barrel going eight-day movement, unsigned, h.13cm (handle down) **£100-150**

2485 **A circa 1900 French gilt brass cased carriage clock**, the case with applied decoration and engine turned pilasters flanking an unsigned white enamel Roman dial, visible platform escapement for a single barrel going eight-day movement, backplate stamped R&Co Made in Paris, h.11.5cm (handle down) **£100-150**

2486 **A late 19th century lacquered brass gorge case carriage clock**, having an unsigned white enamel Roman dial, visible platform escapement, twin barrel going eight-day movement with push button hour and half-hour repeat striking on a bell, the backplate monogrammed EB and numbered 595, h.13.5cm (handle down) **£100-150**

2487 **A circa 1900 French lacquered brass barrel shaped carriage clock with alarm**, having unsigned white enamel Roman dial with subsidiary Arabic alarm dial, visible platform escapement, twin barrel gong eight-

day movement striking on a bell, h.13cm (handle down) **£120-180**

2488 **Henri Jacot of Paris - a late 19th century French minuet barrel shaped carriage clock**, having an unsigned white enamel Roman dial, visible platform escapement, single barrel going eight-day movement, stamped to the backplate and numbered 12089, h.8cm (handle down) **£200-300**

2489 **A late 19th century lacquered brass minuet carriage clock**, having an unsigned white enamel Roman dial with inner Arabic 24-hour dial and subsidiary alarm dial, visible platform escapement, single barrel going eight-day striking movement, h.8cm (handle down), housed in original leather travel case with winding key **£120-180**

2490 **A late 19th century French lacquered brass carriage clock**, the white enamel circular Roman dial within a Greek Key chapter ring and scroll engraved borders, visible platform escapement for a twin barrel going eight-day movement striking on a gong, backplate unsigned but numbered 9370, h.14cm (handle down), the whole housed in leather travel case (case tired and lacking glass) **£150-250**

2491 **A late 19th century French gilded brass carriage clock**, the case with all-over trailing scroll leaf engraved decoration, canted corners flanking an unsigned white enamel Roman dial, with rare visible 'chaff-cutter' escapement, twin barrel going eight-day movement striking on a bell, h.13cm (handle down) **£1,500-2,000**



2492 **Henri Marc of Paris - a late 19th century lacquered brass gorge case carriage clock**, having

unsigned white enamel Roman dial, visible platform escapement, twin barrel going eight-day Japy Freres hour and half-hour bell striking movement, stamped to the backplate and further numbered 40712, h.14.5cm **£200-300**

2493 **Festeau of Paris - a late 19th century French gilt brass cased carriage clock**, the dome top adorned with swags of flowers above a signed convex white enamel dial with Roman hour track and outer Arabic minute dial, twin winding holes for an eight-day brass cylinder movement striking on a bell, h.17.5cm (handle down) **£250-350**

2494 **A mid-19th century French gorge case lacquered brass carriage clock with alarm**, the case having engraved decoration, bevelled glass plates, unsigned rectangular white enamel Roman dial with subsidiary alarm dial, visible platform escapement, twin barrel going eight-day movement striking on a bell, the backplate indistinctly signed and numbered 642, h.14cm **£300-500**

2495 **A late 19th century French lacquered brass carriage clock with alarm**, the case having fluted Corinthian columns flanking white enamel Roman main dial, with subsidiary Arabic alarm dial, twin barrel going eight-day movement with push button hour and half-hour repeat, with three hammers striking on two gongs, visible platform escapement, the backplate numbered 1504, further stamped France, h.14.5cm (handle down) **£250-350**

2496 **A late 19th century lacquered brass quarter repeating carriage clock with alarm**, the case having proud turned and fluted pilasters flanking engraved brass dial, with white enamel Arabic chapter ring and subsidiary Arabic alarm dial, visible platform escapement, the twin barrel going eight-day movement striking three hammers on two gongs, h.17cm **£300-400**

2497 **Aubert & Klapterberger of Geneva - a mid-19th century gilt bronze mantel clock**, the swept case surmounted with birds and cherubs, the signed white enamel Roman dial having twin winding holes for a brass eight-day cylinder movement striking on a bell, h.30cm, w.40cm **£500-700**

2498 **William John Arnsby of Northampton - an Edwardian mahogany and inlaid balloon shape mantel**

clock, of impressive proportions, having a signed silvered Roman 7½" dial, with twin winding holes for a brass eight-day cylinder movement striking on a bell, the whole raised on four brass ball feet, h.45cm **£300-500**

2499 **A late Victorian silver cased balloon shaped mantel clock**, having an unsigned white enamel convex Roman dial with outer Arabic scale, brass eight-day cylinder movement, the case bearing coat of arms, maker Douglas Clock Co Ltd, Birmingham 1900, h.17cm **£150-200**

2500 **J.W. Benson of Ludgate Hill, London - a circa 1900 lacquered brass four-glass mantel clock**, each glass being bevelled, having a white enamel Roman dial signed to the centre, with visible escapement, twin winding holes for a French brass eight-day movement, having mercury compensated pendulum and striking on a bell, h.29.5cm **£200-300**

2501 **A late Victorian gilt brass four-glass mantel clock**, the case with engraved decoration and proud pierced corner mounts, the four glass panels all being bevelled, unsigned white enamel Roman dial with visible escapement, twin winding holes for a French brass eight-day cylinder movement striking on a bell, h.30cm **£200-300**

2502 **Gonnet of France - an early 19th century French mahogany and ormolu portico clock**, the white enamel chapter ring with inner concentric date ring, engine turned centre with recessed silvered seconds chapter ring, blue steel hands, signed 'Gonnet Eleve de Mr Robin' to a reserve, the twin train spring barrel going brass movement having outside countwheel, striking the hours and half-hours on a bell, with pinwheel escapement and elaborate gridiron pendulum, the movement with brass dust cover, h.49.5cm **£700-1,000**

2503 **An early 20th century onyx, lacquered brass and champleve enamelled four-glass mantel clock**, the glass all being bevelled, having a white enamel Arabic dial, with twin winding holes for a French brass eight-day cylinder movement striking on a gong, with mercury compensated pendulum, h.31cm **£200-300**

2504 **A French circa 1900 onyx, gilt brass and champleve enamelled three-piece clock garniture**, the four glass clock with bevelled glass panels, white enamel Arabic dial, twin winding holes for a brass eight-day

cylinder movement, having faux mercury compensated pendulum striking on a bell, h.33.5cm, the garniture each as a pair of pedestal vases, all raised on turned brass feet **£300-500**

2505 **Bright, Flavile & Co of Calcutta - a 19th century gilt bronze cased pendulum clock**, having a signed and silvered Roman dial with subsidiary seconds dial and numbered 23464, the case with both fine engraving and engine turning, the backplate with lion mask engraving, keywind movement, dia.14.5cm **£500-700**



2506 **Maple & Co Ltd of London - a late Victorian mahogany bracket clock in the mid-18th century style**, having an 8" signed convex white enamel Roman dial with brass bezel and convex glass, twin winding holes for an eight-day chain driven fusee movement striking on a gong, the case with brass carry handle and pierced fishscale grilles, raised on brass ogee bracket foot, h.48cm (handle down) **£400-600**

2507 **A late Victorian mahogany and gilt metal mounted bracket clock**, of impressive proportions and in the early Georgian style, having a caddy top above an 8½" unsigned arched brass dial, with silvered chapter ring, matted centre, twin subsidiary chime/silent and chime on eight bells/Cambridge chimes dials to the arch, triple winding holes for an eight-day chain driven fusee movement striking on eight bells and one gong, the case

with gilt metal glazed sound panels and further mounts (all metal tarnished), h.79cm **£600-800**

2508 **S. Smith & Son of The Strand, London - a late Victorian rosewood and floral marquetry inlaid bracket clock**, of impressive proportions, the 7½" arched brass dial having silvered Roman chapter ring, signed tablet to the engraved ground, the arch with three subsidiary dials for chime/silent, slow/fast, and chime on eight bells/Westminster chimes, all for the three train chain driven fusee musical movement striking on eight bells and five gongs, the case having fluted columns and fret carved sound grilles, h.66cm, with original wall bracket, bracket w.49cm **£1,200-1,800**



2509 **A Victorian style brass skeleton clock under glass dome**, having a cut steel Roman chapter ring and eight-day chain driven fusee movement, gross h.40cm **£200-300**

2510 **Joseph Hall of Pickleherring Quay, London - a brass lantern clock**, the frame with tall straps and bell over typical scroll spandrels, 6½" Roman chapter ring, signed and scroll leaf engraved dial, single blue steel hand, weight driven 30-hour movement, sold with weight and pendulum, h.37cm, with 20th century made oak wall bracket *Note: Joseph Hall of London is recorded in G.H. Baillie Watchmakers & Clockmakers of the World as producing a lantern clock in London circa 1684* **£600-900**

2511 **John Spendlove of Thetford - a late 18th century mahogany cased wall clock**, having a signed and painted wooden convex Roman 9¾" dial, with convex glass, single winding hole for a brass eight-day wire driven verge fusee movement (restored and with some later parts), dia.30.5cm **£1,000-1,400**

2512 **A late Regency rosewood wall clock**, having white enamel Roman dial (badly crazed and discoloured but signed Bristol), single winding hole for a concealed movement, dia.24cm **£100-150**

2513 **Wright of Cambridge - a George III mahogany wall clock**, having a repainted convex white enamel signed 12" Roman dial, convex glass and brass bezel, single winding hole for an eight-day brass wire driven fusee A frame movement and signed to the backplate, gross dia.35.5cm **£300-500**

2514 **William Harrison of Chepstow - an early 19th century mahogany and brass inlaid droptruck wall clock**, having a signed 13" convex white enamel Roman dial (restored), brass bezel, convex glass, single winding hole for a brass eight-day wire driven fusee movement, the droptruck with glass lenticle and brass stringing, h.65cm **£300-400**

2515 **A vintage Jaeger car dashboard clock**, having a signed black Roman dial, dia.8.5cm, together with two other car dashboard clocks, being chrome cased example by Smiths of Cricklewood, dia.6.3cm, and a Stadium eight-day example, dia.8.7cm (3) **£80-120**

2516 **A Negretti & Zambra gilt metal cased pocket barometer**, together with matching **pocket compass**, the barometer with signed silvered scale, No. 21039, the compass with signed mother of pearl scale, the whole housed in fitted leather case, the cover with inset thermometer dial, 13.5cm **£100-150**

2517 **A Cornish serpentine Shortlands Smith desk barometer**, 20th century, having signed silvered dial, all raised on polished serpentine socle, h.29cm **£60-80**

2518 **C.P. Goerz of Berlin - a gilt metal cased double-sided mystery desk barometer**, circa 1920, numbered 30520, with paper instruction label verso, h.16.5cm **£70-100**

2519 **Howell James & Company of Regent Street, London - a late Victorian brass clock barometer**, signed to the white enamel barometer dial, the clock having a Roman dial, twin winding holes for an eight-day brass cylinder movement striking on a bell, stamped GV and numbered 3712, the case adorned with Harpies to each side, h.23cm **£150-200**

2520 **A circa 1900 nautical desk brass clock barometer**, as a central anchor with applied thermometer supporting twin barrels, housing white enamel clock and barometer dials and movements, the whole raised upon a polished slate plinth, h.21cm **£200-300**

2521 **A Victorian rosewood and mother of pearl inlaid two-dial wheel barometer**, having unsigned silvered thermometer and main dials, the case profusely inlaid with copper, brass and mother of pearl as trailing flowers and foliage, unsigned, h.104cm **£300-400**

2522 **Edward Burgis of London - a late 17th century ebony basket-top bracket clock**, having a silvered Roman chapter ring with outer minute scale, matted centre, pierced blue steel hands, twin winding holes for a brass eight-day wire driven fusee six pillar movement, with converted anchor escapement, striking on a bell, engraved and signed to the backplate Edward Burgis Londini Fecit, h.29cm (handle down) **£3500-4500**



FURNITURE & FURNISHINGS

2526 **A pair of walnut and figured walnut lamp tables**, in the mid-18th century style, each having cross and feather banded tops above a single frieze drawer, w.62cm, d.48cm, h.76cm **£400-600**

2527 **A walnut and kingwood marble topped bombe commode in the Louis XV style**, having gilt metal mounts, two short and two long drawers, 20th century, w.142cm, d.52cm, h.88cm **£400-600**

2528 **A French kingwood parquetry and marquetry inlaid centre table**, with gilt brass mounts, blind frieze drawer, and raised on square tapering supports, 20th century, w.80cm, d.48cm, h.78cm **£400-600**

2529 **A George III mahogany pedestal tripod table**, the circular tilt-top (split) having a full arcaded gallery, all above a gun barrel turned and spiral fluted urn column to three hipped cabriole supports, h.74cm, dia.63cm **£200-300**

2530 **A 19th century carved and polychrome decorated 'Blackamoor' torchere**, as a lone elaborately dressed acrobat standing on her hands with her neck tipped back, h.84cm **£400-600**



2531 **A pair of 19th century and later adapted carved and polychrome decorated 'Blackamoor' low torchere**, each as a kneeling figure on circular gilded bases, h.59cm, dia.44cm **£600-800**

2532 **A French Napoleon III style mahogany, kingwood and beechwood bonheur du jour** having gilt metal mounts, three frieze drawers, and raised on slender cabriole supports, width 103cm, depth 51cm, height 128cm **£400-600**

2533 **A pair of walnut and figured walnut side tables**, each having cross and feather banded top above twin

frieze drawers, raised on chamfered square supports, w.101cm, d.46cm, h.76.5cm **£500-700**

2534 **A William IV rosewood sofa table**, the rectangular top having rounded corners above twin blind frieze drawers, all raised on heavy turned and tapering columns, w.138cm, d.71cm, h.73cm **£300-500**

2535 **A 19th century rosewood and marquetry inlaid dressing table**, the hinged top opening to reveal an easel mirror with bevelled plate, the whole raised on square tapering supports, w.62.5cm, d.38.5cm, h.77cm **£150-250**

2536 **A 17th century and later Italian walnut cassone**, the top (with replaced section) having iron strap hinges, opening to reveal candle-box fitted interior, above a three-panel front, raised on lion paw feet, w.154cm, d.54cm, h.61cm **£300-400**

2537 **A pair of oak and burr oak bedside chests**, each having crossbanded tops above two short and four long graduated drawers with rosewood crossbanding, w.42cm, d.42cm, h.75cm **£500-700**

2538 **A 19th century elm seat, fruit wood and yew Mendlesham chair**, having a ball back, dished seat, and H stretcher; together with another example (2) **£200-300**

2539 **A George III mahogany secretaire press**, the upper section having a pierced broken swan neck pediment with central pedestal urn, above a later painted interior with later glass shelves, the base fitted with secretaire drawer above two short and two long graduated drawers, w.136cm, d.62cm, h.244cm **£300-400**

2540 **A William IV rosewood library table**, having a gilt tooled leather inset writing surface above twin blind frieze drawers, the whole raised on twin tulip carved end supports, w.151cm, d.80cm, h.74cm **£600-800**

2541 **An early Victorian rosewood framed scroll end chaise lounge**, reupholstered with an Anthemion flower print and with a squab seat and rolled cushion, the whole raised on ring turned tapering supports, with brass castors, width 180cm, seat depth 57cm, gross height 95cm **£200-300**

2542 **A 19th century French rosewood and marble topped commode**, having proud corners flanking four long drawers, w.127cm, d.54cm, h.97.5cm **£300-500**

2543 **A Regency rosewood and inlaid needlework table**, having a hinged top opening to reveal a simple partitioned interior, all above a pleated silk lined well, the whole raised on slender square tapering and scrolling supports united by a platform undertier, w.50cm, d.39cm, h.74cm **£200-300**

2544 **An antique joined oak monk's seat**, 17th century and later, the tilt back with lozenge blind carved panel above a planked seat, with square arms and on bobbin turned upright supports, w.104cm, d.66cm, h.66cm **£200-300**

2545 **An early 19th century mahogany needlework table**, of shaped circular form, with a chevron strung edge, single frieze drawer above a pleated silk lined well, w.43cm, d.40.5cm, h.76cm **£150-200**

2546 **A Victorian mahogany round corner chest of two short and three long graduated drawers**, each with flush brass handles, w.118cm, d.54cm, h.121cm **£200-300**

2547 **A George III mahogany pedestal tripod table**, having a one-piece circular tilt-top over a baluster turned column, on three hipped cabriole supports with pad feet, dia.81cm, h.70cm **£80-120**

2548 **A mid-18th century walnut linenpress**, the twin cross and feather banded doors opening to reveal a shelved interior with twin base oak drawers, the chest having a brushing slide over four long graduated drawers, w.92cm, d.52cm, h.186cm **£300-400**

2549 **A pair of Victorian style figured walnut cross and feather banded bedside chests**, of three long graduated drawers, each raised on bun feet, w.36cm, d.35cm, h.61cm **£400-600**

2550 **A late Georgian mahogany secretaire bookcase**, the upper section being astragal glazed and having adjustable shelves, the base with well-fitted secretaire drawer with ivory knobs, w.108cm, d.53cm, h.220cm Ivory submission ref: H4JWSXFM **£400-600**

2551 **A 19th century mahogany pedestal wine table**, having a now fixed but once tilting octagonal top with

raised and reeded edge, all on a slender turned, knopped and reeded column to hipped cabriole supports, w.36cm, d.28.5cm, h.71.5cm **£80-120**

2552 **An 18th century Dutch burr oak bombe commode**, having a shaped top above four long graduated drawers, all raised on claw and ball feet, w.105cm, d.60cm, h.86cm **£300-500**

2553 **A Persian woollen Tabriz rug**, having a peach ground with central medallion, flowers and foliage, within trailing tramline borders, 142 x 193cm **£120-180**

2554 **A late Regency mahogany four-tier whatnot**, with base drawer and raised on brass cup casters, w.45cm, d.40cm, h.115cm **£100-150**

2555 **An 18th century pine and fruitwood settle**, having a three-panel back above a box seat, w.157cm, d.42cm, h.121cm **£300-500**

2556 **A Victorian burr walnut canterbury whatnot**, the top with pull-out writing drawer, having hinged tooled leather writing surface above three fret carved sections and further concave blind frieze drawer, w.66cm, d.55cm, h.81cm **£200-300**

2557 **A French mahogany rosewood and satinwood inlaid transitional style commode**, early 20th century, gilt metal mounted, with rouge breccia marble shaped top, two long drawers, raised on slender cabriole supports with scroll mounts, h.90.5cm, w.99.5cm, d.49cm **£800-1,000**



End of sale

Entries Always Invited for Future Auctions

Home & Interiors

These three weekly sales are the largest of their kind in East Anglia. The majority of lots come from house clearances including deceased estates, and range from modest items worth a few pounds to good quality reproduction furniture, Georgian and later antiques selling for up to £1000.

Contact: Shaun Crichton MA scrichton@lsk.co.uk

Fine Art & Antiques, Classic Cars & Motorcycles

Quarterly Fine Art sales encompassing approximately 600 lots that include antiquarian books, fine ceramics & glassware, silver, jewellery and watches, Asian art, objet d'art, pictures & prints, clocks & barometers, rugs, and fine furniture and furnishings. Our June sales include a section of classic and vintage automobiles and motorcycles.

Contact: Edward Crichton ASFAV ecrichton@lsk.co.uk

Toys & Models

Lacy Scott & Knight hold the largest sales of Toys and Collectors' Models in the UK six times per year, to include; diecast vehicles, trains of all age and gauge, live steam engines, lead and plastic figures, Dinky & Corgi Toys, Matchbox, retro video games, railwayana, action figures & Star Wars etc

Contact: Oliver Leggett BA Hons oleggett@lsk.co.uk

Jewellery & Watches

Three Jewellery & Watches auctions per year to include vintage and modern items of quality and costume jewellery, fob, pocket & wristwatches, and all manner of bijouterie ranging from £50-500.

Contact: Hannah McWhirter FGA, DGA jewellery@lsk.co.uk

Twentieth Century Art & Design

These quarterly sales include pieces from the Aesthetic Movement, Arts & Crafts, Art Nouveau, Art Deco, Bauhaus, De Stijl, Modernism, Post-Modernism, Memphis, Modern Art, Pop Art and Contemporary Art, with items by names such as Clarice Cliff, Lalique, Moorcroft, & Liberty etc

Contact: Shaun Crichton MA scrichton@lsk.co.uk

Medals & Militaria with Country Pursuits

Twice-yearly Medals & Militaria sales to include military & honorific medals, antique firearms, uniforms, edged weapons and other related ephemera. Followed by an auction of sporting related effects to include taxidermy, horse-racing and fishing ephemera etc

Contact: Glenn Pearl gpearl@lsk.co.uk

Coins, Tokens & Banknotes, Music, Film & Sport Memorabilia

Twice yearly auctions to include antique & commemorative coinage and coin sets, banknotes and tokens, film posters, autographs, collectable vinyl, film props and much more.

Contact: Glenn Pearl gpearl@lsk.co.uk

Asian Art

To include Asian Art & Antiques ranging from from fine Chinese porcelain to Japanese ukiyo-e woodblock prints, bronzes, jade carvings etc

Contact: Dr Jun Kong PhD (Cantab), MA (SOAS) asianart@lsk.co.uk

Wine, Port & Spirits

To include; fine and affordable wines, ports, spirits and related ephemera.

Contact: Edward Crichton ASFAV ecrichton@lsk.co.uk

PLEASE READ THE CONDITIONS OF SALE AS DISPLAYED AT THE AUCTION CENTRE AND ONLINE

TEL: **01284 748 625** E-mail: FINEART@LSK.CO.UK

The Auction Centre, 10 Risbygate Street, Bury St Edmunds, IP33 3AA